

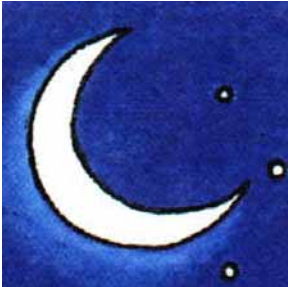
# THE GARDEN PATCH



May 2008

Salt Lake Master Gardener Association

Vol. 10, No. 5



## Some Night Magic

By Jo Turpin

Finally, spring has made it to the Wasatch Front and my neighborhood is busy and noisy. People are pruning, edging, mowing, planting and fertilizing, even sprinkler repair is a good reason to be outside. In the evening my neighbors like to take a stroll and visit with one another and see who is doing what in their yard.

Several neighbors have stopped to ask about particular plants or to ask when I find the time to do all that yard work. This is usually followed by a comment about how they can't find time after work, errands, dinner and so on to plant a flower or a vegetable garden. And, naturally, if they could plant something when would they have time to enjoy it? And it hit me!

Plant a White Garden, a Moon Garden, a garden that reflects moonlight and let's you enjoy the night. This is an especially good idea in Utah when it can be nine o'clock before it is cool enough to spend an hour unwinding outside. Even a few well placed plants that can be seen from your windows can provide a mental pick me up. A patio with a few planters filled with fragrant, light colored plants and flowers can also be a great place to relax and enjoy the evening without the work load of a large garden.

Gardeners have a lot of options when it comes to adding some magic to the night. Many plants open in the evening hours and fragrant flowers are more enjoyable when the night becomes quiet and distractions are at a minimum. The variety of flowers and plants available in light or pale colors has never been better and garden accents and décor come in all sizes and colors too. White statues or figurines, light colored benches, white trellises, a pale blue birdhouse or a white gravel path can all add to your enjoyment. Water features are wonderfully soothing at night and the moonlight reflecting off the water can be a beautiful sight.

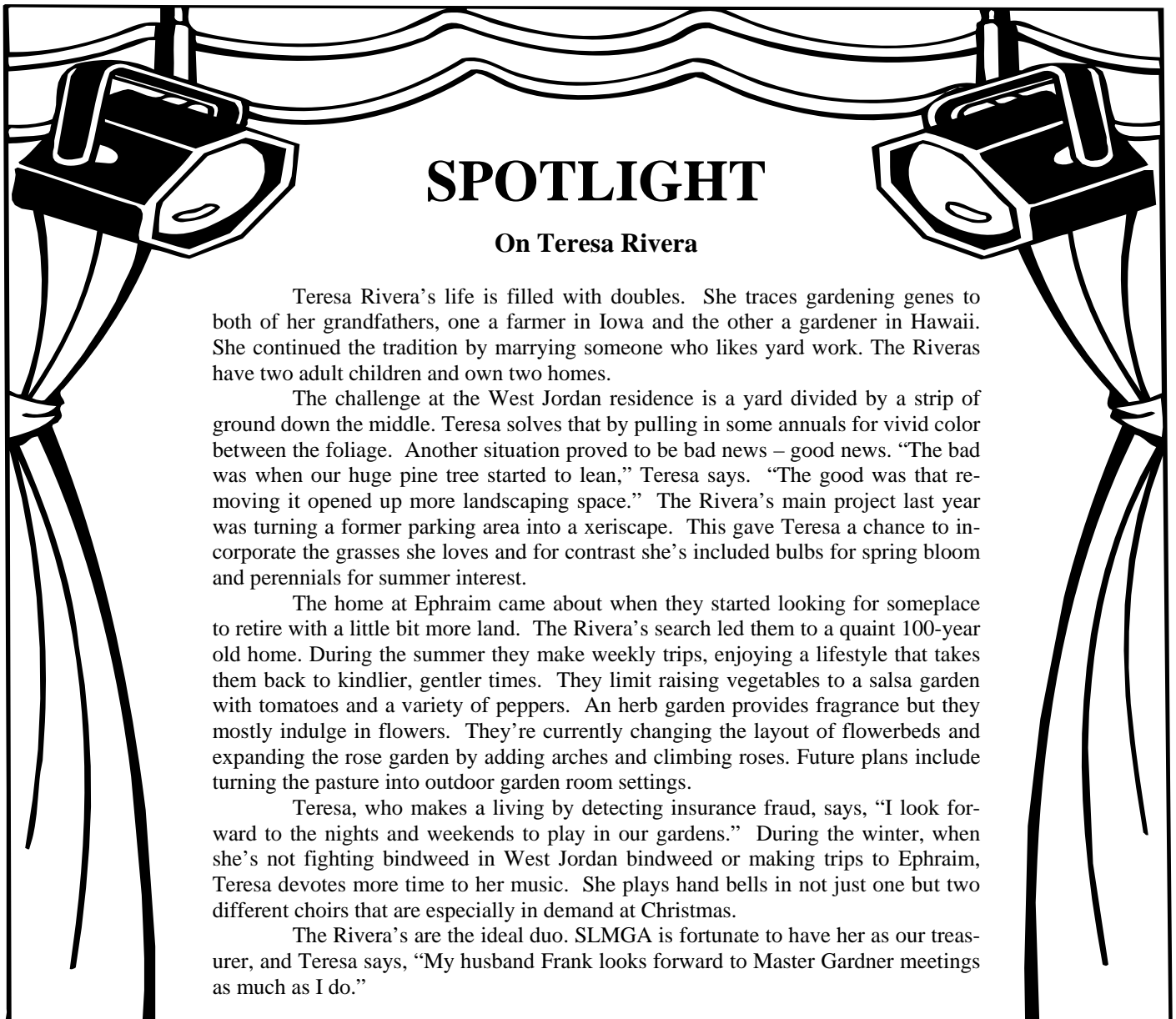
To get started, decide if you want just a few accent plants like a border of white dianthus, with their spicy scent, and Sweet Autumn Clematis (*Clematis terniflora*) trellised up a wall; or a larger display that spreads white shades throughout the garden; or even a small arbor planted with light colors that will provide an evening hideaway. Before you choose think about how your choices can enhance your garden during daylight hours too; creamy, pale colors against deep green foliage can be striking at any time. Remember to add texture as well as color, the silvery green of Lamb's ear is a good choice and moonlight will play off the light color of the foliage. Variegated foliage also shows well in moonlight.

Some suggestions for plantings include mixing Morning Glory (*Ipomoea*) and Moonflower (*Ipomoea alba*) vines together for a display that blooms through the day and into the night. Evening Primroses (*Oenothera*) that open late in day are available in many pale shades and Evening Stock (*Matthiola incana*) is very fragrant at night. Four O'Clocks have a wonderful Jasmine like scent at night. Flowering tobacco, or *Nicotiana*, produces tubular scented flowers that open in the evening and even the Yucca plant offers a soapy scent and white bloom at night. For beauty during all hours try a white Bleeding Heart (*Dicentra spectabilis* 'Alba').

For some extra fragrance in the evenings plant a few herbs. Silver sage offers silvery green foliage for the light to play off of and rosemary, silver thyme and many types of lavender also offer the best of both worlds. Most light colored flowers and plants will show well in moonlight – lavender, cream, light pink, pale blues and yellows are all good choices.

Plan to spread your enjoyment through the seasons. White Pearl Hyacinths, Mount Hood or Bridal Crown Narcissis and the Purissima Tulip can start the show in early spring – and all of them are fragrant too! Casa Blanca Lilies, white astilbe, white foxgloves, campanulas, daisies, bellflowers, carnations and a variety of white roses will take you into the summer. For the fall there is clematis, chrysanthemum, asters, anemones and white pumpkins and gourds. And don't forget that hellebores can bloom in very chilly weather.

There are so many plants to choose from with a white, or moon, garden. Fragrant vines like Honeysuckle and Jasmine, daylilies such as the night blooming Moon Frolic, Mock Orange shrubs, variegated hosta and caladiums, silver foliaged Dusty Miller and artemisia, white vinca and 'White Nancy' lamium for groundcovers, white petunias for a front porch planter. Or maybe a white birch tree with a white bench underneath – the perfect place to sit and enjoy the sights, sounds and scents of the night.



## SPOTLIGHT

### On Teresa Rivera

Teresa Rivera's life is filled with doubles. She traces gardening genes to both of her grandfathers, one a farmer in Iowa and the other a gardener in Hawaii. She continued the tradition by marrying someone who likes yard work. The Riveras have two adult children and own two homes.

The challenge at the West Jordan residence is a yard divided by a strip of ground down the middle. Teresa solves that by pulling in some annuals for vivid color between the foliage. Another situation proved to be bad news – good news. “The bad was when our huge pine tree started to lean,” Teresa says. “The good was that removing it opened up more landscaping space.” The Rivera's main project last year was turning a former parking area into a xeriscape. This gave Teresa a chance to incorporate the grasses she loves and for contrast she's included bulbs for spring bloom and perennials for summer interest.

The home at Ephraim came about when they started looking for someplace to retire with a little bit more land. The Rivera's search led them to a quaint 100-year old home. During the summer they make weekly trips, enjoying a lifestyle that takes them back to kindlier, gentler times. They limit raising vegetables to a salsa garden with tomatoes and a variety of peppers. An herb garden provides fragrance but they mostly indulge in flowers. They're currently changing the layout of flowerbeds and expanding the rose garden by adding arches and climbing roses. Future plans include turning the pasture into outdoor garden room settings.

Teresa, who makes a living by detecting insurance fraud, says, “I look forward to the nights and weekends to play in our gardens.” During the winter, when she's not fighting bindweed in West Jordan bindweed or making trips to Ephraim, Teresa devotes more time to her music. She plays hand bells in not just one but two different choirs that are especially in demand at Christmas.

The Rivera's are the ideal duo. SLMGA is fortunate to have her as our treasurer, and Teresa says, “My husband Frank looks forward to Master Gardner meetings as much as I do.”

## Wheeler Farm Veggie Garden

Dorothy Lee and Bob Moss are project managers for the Wheeler Farm Veggie Garden and would love to have some volunteers come and help them.

Bob will be there on Wednesdays from 6:00 p.m. to dark. His e-mail is [rmoss34@comcast.net](mailto:rmoss34@comcast.net)

Dorothy will also be there on Wednesday evening starting at 6:00 p.m. until dark. Her e-mail is [creekside55@yahoo.com](mailto:creekside55@yahoo.com)

Come and get instructions from us one time and then you may come back and work anytime that fits into your schedule. Dorothy would love to have people work with her on Wednesday night. It's fun to get better acquainted and we can learn so much from each another.

## Plan to plant an extra row for Fresh From the Heart

Peggy Call and the *Christmas Box House* crew are looking for interesting seeds and tree seeds. If you have any, please consider donating them.

# Plans for SL County Fair Already Underway

By Val Chatwin

This year the Salt Lake County Fair will be held Aug. 5, 6, 7, 8, starting at 11 a.m. and going until 11 p.m. each day. I am the Supervisor of the Agriculture this year and fellow Master Gardener John Kalaski is an assistant. Jay Fullmer is still around to keep us on track also.

They are going to have the classes like we tried out last year again. Paul Zuckerman will bring his surround of wild flower pictures. Our area there is called the Garden Gate.

## TOMATO TASTE TEST

Of all the classes we held last year, the most people came to the Tomato Taste Tests. Bart Anderson and John Kalaski did one on separate days; they told about how they grow them (they use quite different methods, interesting enough.) They grow both heirloom tomatoes and hybrids, and both men had personality plus in teaching. I would like to plan for a Tomato Taste Test all four days. So I need two volunteers for the other two days. I do not know who grows several kinds of tomatoes besides Golden. I talked to a fellow from the new class at the Home & Garden Show, where we were in the booth together. He grows heirlooms and said he would do a class but, stupid me, I failed to get his name. Whoever you are, please call or e-mail me at valray@netutah.net 641-3546, 254-3357? If someone has the tomatoes and would like someone else to teach, we could do that too.

The taste test would not have to have any heirloom types; we had a taste test at Pioneer Park last summer with the little cherry tomatoes. We only had two kinds. The people really get serious about it. This wasn't anything scientific but we wondered if the first one they tasted would always be the one they liked so we alternated it. We were not recording anything. It was really fun.

## FIRST DAY HELPERS

Those who want to help on Wednesday Aug. 5 which is the first day, 7 a.m. until noon, please e-mail me or tell me at meetings. They give you lunch and free parking. The fair starts at 11 a.m. so you can tour around the fair. The Master Gardeners who helped on opening day made things work well. They helped enterers, put entries out and helped the judges. They were wonderful.

## CLASSES

I will be contacting the teachers for the lectures. I am changing some subjects that no one came to last year. It is still early to know what you are doing in August.

## MASTER GARDENER QUESTION ANSWERERS

During the times when there is no class going on in the Garden Gate area we would like 2 or 3 Master Gardeners at the

Garden Gate area to answer questions. Here is the schedule:  
Wednesday, Aug. 6 - 7 a.m. to noon. also shifts at 11 a.m. and 1 p.m. and between 4 p.m. and 5 p.m.  
Thursday Aug. 7 - 11 a.m. until 1 p.m. and from 4 p.m. to 5 p.m.

Friday Aug. 8 - 11 am till 1pm and 4pm to 5pm  
Saturday Aug. 9 - 11am till 1pm and 4pm to 5pm

I prefer you to email me valray@netutah.net I am hard to catch on the phone

If you can help, great. If not, don't forget to bring your families and attend the fair for fun!

# Fresh From the Heart

By Jennie Gibson

We encourage anyone starting tomato plants to donate some to be used at the classes. This project will help low income folks raise food for themselves.

We also encourage all Master Gardeners to grow extra fruits and vegetables to donate to your local food pantries. Information on the pantry locations around the valley will be included in future issues of *The Garden Patch*. As good Master Gardeners educating the public, let's also encourage our friends and neighbors to grow extra produce to donate. We can help bless many people by providing tasty nourishing food this year. Remember that all of the time you spend doing any of these related activities can be counted for volunteer hours in accordance with the rules Maggie has explained.

# ATTENTION

The enclosed 2008 SLMGA Phone list is for your use in contacting fellow master gardeners. This list is provided to help you in your Master Gardener efforts. **It is not to be used for soliciting of any kind.** Sometimes we have a Master Gardener who has a business, and they want to use our list for advertising. This is Not an appropriate use of the list.

Please respect the privacy of your fellow Master Gardeners by using the list only for SLMGA-related needs. As you work with other MGs and create new friendships, your other interests and projects may become evident. That's okay. We just can't use official SLMGA channels for anything that implies advertising. We are a legally approved non-profit association.

Additions to the list may come as more renewals come in through the year. Please add those in on your list.

As a follow up to my propagation presentation for the general meeting in March, I found out a few more quirks in planting seeds. In planting the Hibiscus 'Red Shield', the instructions were to place the seeds in boiling water then let them stay in the water for 24 hours while the water cools, then plant the seeds. Another plant called cleome 'Cherry Queen' requires you to lay the seeds on top of the soil of the container then place it in a plastic bag and refrigerate it for two weeks before putting it on the seeding mat. It should take about two weeks to germinate. Nothing has happened yet. I will keep looking.

I transplanted my tomatoes outside in water walls the first part of April - one month later than last year - and all ready they have been covered with snow twice. On April 16<sup>th</sup> the water walls were almost frozen all the way but the plants are still ok. The heavy snow storm left a few of the outer leaves burned a little but they are still growing.

The Cole crops under the row cover survived the cold weather as well with no apparent damage. This has been a really different spring; I am still waiting for April weather to arrive. It seems as though February wants to stay around forever.

With the cold and cloudy weather we have been having, my early tomato plants grew a little long and leggy after being moved in to the green house. To solve that problem I cut them off with just two leaf nodes remaining and repotted them. I now have a great crop growing. When I was young, my parents would get tomato plants that had the tops cut off, roots washed and bundled like green onions. We still had a good crop of tomatoes and with a lot less fussing over them

We had a good turn out for the grafting class at Bart Anderson's place. There was a lot of scion wood to share. The weather was cool but warmed up to be a great day. With the cold weather and the sap not running, the scion wood will need to be stored in the refrigerator until the trees blossom before being used. You then have a window of time of about two months for it to be used.

My perennial plant bed has had a mole in it over the winter and has caused a lot of problems. The rootas of the ornamental grasses have been eaten off; some will survive but most will not. The irises had all their roots eaten as well, and when I picked up the plant it came out with any effort. I have taken some starts from it and tried to water it and replant it back into the ground. There were holes and some areas that it had eaten furrows around the lawn. I had to redo the wall I had around the area and move the soil back in to place. I am watching it quite closely to see if there is any more activity. I did see a wild cat sitting on top of the bed a few times. Maybe he got a good meal. Only time will tell.

Silly Willy has a new playmate. Chuckie Cheese is his name. Now with two dogs I am glad to have the new fence in my backyard and have my gar-



**By Wm. Golden Reeves**

den safe from them. I had to put up a small fence to protect a flower bed in the backyard. They like to play with each other and with that they leave the plants alone. I don't think the lawn will grow much, but Cynthia says that is ok.

I have a lot of 'Glacier' tomato plants in gallon containers and larger and with a lot of tomatoes set on them. I will use them for teaching and to give at some of the classes I am teaching. Salt Lake Community College Staff Enrichment is the next class I am to teach. That should be a lot of fun.

I received the 300 bedding plants from Miller Nurseries and have planted them at my son's place. They did not go as far as I though they would go. We counted them and found they had sent a few more of each variety. The plants were in good shape and will need to wait to see how they are going to grow. The next step is to put in the irrigation system before we can take care of the rest of the planting that needs to be done. I moved two of the clumps of 11 foot tall grasses from my mow strip to his yard and was able to divide it in to 9 clumps. With the rest of the landscaping in place it should look great.

Keep your tomatoes in water walls, keep your eye on the weather, and tell old man winter it's time to leave. We do need spring to come at last!

**Jordan Valley Water  
Conservancy District  
Conservation Garden Park Garden Fairs  
Saturday May 17 and June 14  
8 a.m. to 2 p.m.**

Master Gardeners have a booth at the Garden Fairs providing information and resources, answering gardening questions at these popular garden fairs. Contact Barbara Larsen to volunteer. [endlesspromos1@msn.com](mailto:endlesspromos1@msn.com)

**Bart's Zucchini Surprise  
Created by Bart Andersen**

Cube onion, slice green pepper, small zucchini and mushrooms and sautee the works in a saucepan. Amounts depend on how much you want to make and how much you like of each ingredient.

Add one can of prepared chili and heat thoroughly. Eat as much as you like.

## Wheeler Farm Herb Garden

By LaWana Kosel

My goodness, we finally got in a great night's work on the herb garden and are starting to make it look good again. I hope the weather is going to straighten out now so we can really get it going.

We put back in some of the labels we made last year. Some things are not up yet or we cannot find them, so we still have a challenge ahead of us. I would like to see some of the people who built the garden last year to come out and get the new people acquainted with our garden. Come and join us any or every Wednesday evening at 6:00 p.m. We will be planting annual herbs and adding new pages to our book, "The Herbs of Wheeler Farm" so come and learn all about the uses, fragrances, and beauty of Herbs. I will be looking forward to seeing you on Wednesday. Thank you!

Remember

### Fresh From the Heart

Plan to grow a little extra to donate to the local food pantries.

## Annual People Helping People Garden Tour

The 4<sup>th</sup> annual PHP Garden Tour is scheduled for Saturday, June 14<sup>th</sup> in the Avenues. We will need about 24 master gardeners to staff the gardens - 12 each for morning and afternoon shifts. They will receive a free ticket to the tour, an event T-shirt and lunch.

Contact Barbara Larsen if you are interested in doing volunteer hours at this event. Contact her at [endlesspromos1@msn.com](mailto:endlesspromos1@msn.com)

You can also just enjoy the event without volunteering. Tickets will be \$10 this year. All proceeds support the Successful Employment Program, helping women earn a living wage.

## Tracy Aviary Winter Volunteer Hours

You can get a head start on your volunteer hours for 2008 at Tracy Aviary. They are there every third Sunday of the month at 9:00 a.m. January through March, Liberty Park

Volunteers are working in the greenhouse germinating seeds and preparing for spring in the Aviary on the third Sunday of the month.

## Volunteer Opportunities

**Ag in the Classroom Farm Field Days, Butterfield Century Farm**, 13000 South 6225 West, Herriman – Tuesday and Wednesday May 6-7

Volunteers who would like to work with kids needed for these demonstrations/teaching children where our food comes from. Master Gardeners will be teaching about wheat and actually grinding wheat. We need volunteers each day, and there are 3 shifts. The shifts are 9:30am to 11:00am, 11:00am to 12:30pm, 12:30pm to 2:00pm. There will also be a volunteer appreciation BBQ at 3:00pm for all volunteer teachers at the farm. Each presentation is about 10 minutes long to about 25 children at a time, and then rotate to another station. Sign up with project leader Lisa Chin at Email: [something\\_clever@msn.com](mailto:something_clever@msn.com).

**Wasatch Community Garden Plant Sale – May 10**

Volunteers still needed to help as plant experts. Master Gardeners would be wonderful plant experts for this fundraiser for Wasatch Community Gardens. There is an orientation for plant experts and then you can help folks the day of the sale to find the right plant. Contact Kaytee Smith, volunteer coordinator. E-mail her at [outreach@wasatchgardens.org](mailto:outreach@wasatchgardens.org). One of the benefits as a volunteer, you are invited to the pre-sale and get first chance to buy plants.

Julie Myers and Ann Scott have  
**gardening calendars**

available for \$3 which detail when to plant what and when to do certain gardening chores for our area. Contact them by phone (see phone list enclosed with this issue or mailed separately)

# SLMGA PROJECTS

Project Project Leader/Coordinator	Location	Activities	Time	# of Volunteers Needed Per Event
<b>Channel 4 Garden</b> Heidi Wayman Email: <a href="mailto:heidi.wayman@usu.edu">heidi.wayman@usu.edu</a>	2175 W. 1700 S. SLC	<ul style="list-style-type: none"> <li>• General garden maintenance</li> <li>• Pruning, weeding, planting, etc.</li> </ul>	Tuesdays 8:00 to 10:00 am <b>April thru August</b>	3 each Tuesday
<b>Christmas Box House</b> Peggy Call Email: <a href="mailto:pcall@xmission.com">pcall@xmission.com</a>	3660 S. West Temple, SLC	<ul style="list-style-type: none"> <li>• Teaching gardening to children at residential facility.</li> <li>• Tending garden at facility.</li> </ul>	Tuesdays 6:30 to 7:30pm <b>Year round</b>	2 or 3 each Tuesday
<b>Diagnostic Clinics</b> Maggie Shao Phone: 468-3178 Email: <a href="mailto:maggie.shao@usu.edu">maggie.shao@usu.edu</a>	2001 S. State St. SLC	<ul style="list-style-type: none"> <li>• Helping public walk-ins with plant questions or problems at our office.</li> </ul>	Mondays 1 to 4pm <b>June thru August</b>	Open
<b>Fresh From The Heart I</b> <i>(Growing and harvesting veggies from your own garden)</i>	Various food pantries around SL County	<ul style="list-style-type: none"> <li>• “Grow a row”: Setting aside part of your garden to grow and harvest high quality produce for a food bank.</li> </ul>	Flexible <b>Growing Season</b>	Open
<b>Fresh From the Heart II</b> <i>(Teaching container gardening)</i> JoDeane Condrat Email: <a href="mailto:condrata@comcast.net">condrata@comcast.net</a> Jennie Gibson Email: <a href="mailto:gibsongg@earthlink.net">gibsongg@earthlink.net</a>	Various food pantries around SL County	<ul style="list-style-type: none"> <li>• Teaching container gardening at food pantries.</li> <li>• Gathering donations.</li> <li>• Coordinating purchase of items for container gardens.</li> </ul>	Usually daytime <b>May-June</b>	4-6 per event
<b>Garden Patch Newsletter</b> Jenny Allgrunn Email: <a href="mailto:gardenpatch2@juno.com">gardenpatch2@juno.com</a>	Various	<ul style="list-style-type: none"> <li>• Researching and writing articles for the Salt Lake Master Gardener Association newsletter.</li> </ul>	Flexible <b>Year round</b>	Open

Project Project Leader/Coordinator	Location	Activities	Time	# of Volunteers Needed Per Event
<b>Gilgal Garden</b> Bev Sudbury Email: <a href="mailto:beverlysudbury@yahoo.com">beverlysudbury@yahoo.com</a>	749 E. 500 S. SLC	<ul style="list-style-type: none"> <li>• A Public garden that Salt Lake MGs have been working to restore it to its original unique condition.</li> </ul>	Tuesdays 3 to 6pm <b>April thru September</b>	4-6 each Tuesday
<b>Murray Park</b> Becky Hansen Email: <a href="mailto:hansenpollei@mstarmetro.net">hansenpollei@mstarmetro.net</a>	5100 S Murray Park Lane Murray	<ul style="list-style-type: none"> <li>• Pruning, weeding, planting, etc.</li> </ul>	Tuesdays 8 to 10 am <b>April thru September</b>	4-6 each Tuesday
<b>Pioneer Park Farmers Market</b> Karen Crook Email: <a href="mailto:garykarencrook@comcast.net">garykarencrook@comcast.net</a> Andrea Berman	300 W. 300 S. SLC	<ul style="list-style-type: none"> <li>• Public information on USU resources and general gardening information.</li> <li>• Providing some diagnostic and recommendations for plant problems.</li> </ul>	Saturdays 9am to 1pm  <b>June 14th and 28th July 12th and 26th Aug. 9th and 23rd Sept. 6th</b>	4 per Saturday
<b>Phone Help Line</b> Maggie Shao Email: <a href="mailto:maggie.shao@usu.edu">maggie.shao@usu.edu</a>	2001 S. State St. SLC	<ul style="list-style-type: none"> <li>• Helping public with plant questions on the telephone.</li> </ul>	M-F 9 to 5pm 2-3 hour shifts <b>May thru Sept.</b>	1 per shift
<b>Public Relations &amp; Community Talks</b> Barbara Larsen Email: <a href="mailto:endlesspromos1@msn.com">endlesspromos1@msn.com</a>	Various locations thru SL County	<ul style="list-style-type: none"> <li>• Libraries</li> <li>• Neighborhood &amp; homeowner associations</li> <li>• Church groups</li> <li>• Relief societies, etc.</li> </ul>	As requested by community groups <b>April thru August</b>	1-2 per talk
<b>Salt Lake Co. Jail Horticulture</b> Maggie Shao Phone: 468-3178 Email: <a href="mailto:maggie.shao@usu.edu">maggie.shao@usu.edu</a>	3415 S. 900 W.	<ul style="list-style-type: none"> <li>• Hands on veg. gardening with low risk inmates at the Adult Detention Center</li> </ul>	Mondays or Wednesdays or Fridays 9 to Noon <b>May thru August</b>	1-2 per shift

Project Project Leader/Coordinator	Location	Activities	Time	# of Volunteers Needed Per Event
<b>Tracy Aviary</b> Matthew Utley Phone: 596-8500 Email: <a href="mailto:Mat-thewU@TracyAviary.org">Mat-thewU@TracyAviary.org</a>	589 E. 1300 S. SLC	<ul style="list-style-type: none"> <li>Assist with enhancing grounds and bird habitats</li> <li>Help plan and create a demo garden of native plants that attract birds</li> </ul>	Sundays 9 to Noon And Mondays 7 to 9 pm <b>May thru September</b>	Minimum of 2 More always welcome
<b>Utah Aids Foundation</b> Kay Packard Phone: 278-5958 Email: <a href="mailto:kaypackard@comcast.net">kaypackard@comcast.net</a> Jeff Asay Phone: 597-2380 Email: <a href="mailto:jeffrey.asay@comcast.net">jeffrey.asay@comcast.net</a>	1408 S. 1100 E. SLC	<ul style="list-style-type: none"> <li>Planting, weeding, and general maintenance.</li> </ul>	Tuesday 5:30 to 7pm <b>May thru Sept.</b>	2-4 each Tuesday
<b>WHEELER FARM GARDENS</b>				
<b>Veggie</b> Bob Moss Phone: 523-3820 Email: <a href="mailto:rmoss34@comcast.net">rmoss34@comcast.net</a> Dorothy Lee Phone: 278-9258 Email: <a href="mailto:creekside55@yahoo.com">creekside55@yahoo.com</a>	6351 S. 900 E.	<ul style="list-style-type: none"> <li>On June 17, 1886 Sariah H. Pixton &amp; Henry J. Wheeler married and made their home on this 75 acre farm.</li> <li>In 1969 SLCo. purchased Wheeler Historic Farm. It was placed on both the Utah State and National register of Historic Places in 1976.</li> <li>MGs work several gardens in the 120-year-old historic farm offering a wide variety of opportunities for volunteers.</li> </ul>	Tuesdays 7 to 9am	2-4 each Tuesday
<b>Pumpkin</b> Golden Reeves	6351 S. 900 E.		As needed	As needed
<b>Herb</b> LaWana Kosel Phone: 277-5044 Email: <a href="mailto:lawanak_01@msn.com">lawanak_01@msn.com</a>	6351 S. 900 E.		Wednesdays 6 to 8pm	2-3 each Wednesday
<b>Home</b> Sandy Burgess Phone: 265-2324 Email: <a href="mailto:sandyleeb46@msn.com">sandyleeb46@msn.com</a> Ofc. phone: 324-5132 Email <a href="mailto:sandy.burgess@questar.com">sandy.burgess@questar.com</a>	6351 S. 900 E.		Wednesday 6 to 8pm	2-3each Wednesday

## Companion Planting: Romance in the Garden or a Practical Approach?

By Pam Barringer

Companion planting, or companion gardening is the practice of planting two different plants in close proximity to each other on the theory that they help each other in some way.

Companion planting, historically, is thought to go back to the time of the Romans and has been apparent in the country gardens of Europe and in the Native American culture as well. As an example, American Indians planted corn with pole beans and squash, better known as the Three Sisters technique--the corn allowed the pole beans and squash to climb on its stalks. Efficient? You bet! Today, in modern culture, "Integrated Pest Management" is the popular concept and companion planting plays a role in the control of certain pests.

Plant the stinky and common marigold and ward off aphids and other damaging vermin. Some vegetables are plagued with caterpillars but plant the eatable Nasturtium alongside and the caterpillars will prefer the Nasturtium any day! That's called "Trap Cropping." If an organic garden is the goal then knowledge of Companion Planting is a must when pest management is very limited. Planting nitrogen-producing plants will provide needed nutrition to other plants and lessens the need for commercial fertilization and rotation of crops from year to year will also lessen the depletion of nutrients from the soil, so a garden plan, on paper, is essential. Planting insect-attracting plants deters the pests from attacking the garden plant. Did you know the tiny flowers of the alyssum attract beneficial insects? Let it spread and its sweet smell will perfume your garden throughout the growing season.

The term Square Foot Gardening comes from planting multiple plants very close together and offers competition to the pests that would normally invade the area. Raised bed gardening is also recommended as a way to companion plant especially with some of Utah's infamous clay soils.

So, is companion planting complicated? Not really. Thanks to the Internet and other published data and a little planning you can have fun in the garden and see if it really works! There are many charts that list companion plants and here is one that could be very helpful.

### Companion Plants:

Try	With	For
Borage	Pumpkins, squash, cucumbers and a variety of plants	Squash Bug and other insect control. A disadvantage is they spread "everywhere".
Basil	Peppers, Tomatoes, Marigold	Keeps flies and mosquitoes away
Garlic	Roses, tomatoes and a wide variety of flowers and vegetables.	Wards off aphids and other insects and pests.
Mint	Cabbage and Broccoli	Deters Cabbage moths
Marigold	A wide variety of flowers and vegetables.	Wards off insects. They are also used in organic insect sprays
Nasturtium	Pumpkins, Squash, and a wide variety of vegetables.	Deters Cucumber Beetles, Squash Bugs, Aphids, and more. And, they are edible!
Rosemary	Cabbage and Broccoli	Deters Cabbage moths
Sage	Carrots	Wards off carrot fly
Thyme	Cabbage	Deters cabbage worm
Radishes	Spinach	Radishes attract leaf miners away from the spinach and will not harm the radish growing below the soil.
Collards	Catnip	Catnip alongside collards reduces flea-beetle damage on the collards

Table courtesy of The Gardener's Network, with a few other items added from other sources  
<http://www.gardenersnet.com/atoz/compan.htm>

Some plants, besides being beneficial to ward off pests, simply like growing next to each other and that's where the "Romance" part comes in. Carrots love growing next to peas, lettuce, chives, onions, leeks, rosemary, sage, and tomatoes. Basil improves the flavor of tomatoes and there's nothing better than a homegrown, tasty, red-ripe tomato! Tall, sun-loving plants protect smaller sensitive companions from the sun and vining plants and tall plants can grow together happily in the same space.

There are so many beneficial plant combinations and ideas to try and one of the best resources is Rodale's *The Encyclopedia of Organic Gardening*. Now is the time to plan and test out ideas and get the very best from your gardening effort.

## Other Events

**Saturday, May 3**

Red Butte Plant Sale

Utah Native Plant Sale at REI

**Saturday, May 10** - Wasatch Community Gardens Plant Sale

**Saturday, May 17** - Jordan Valley Water Conservancy District Garden Party. **Volunteers Needed. See Page 4 for details**

## Gilgal Garden

By Bev Sudbury

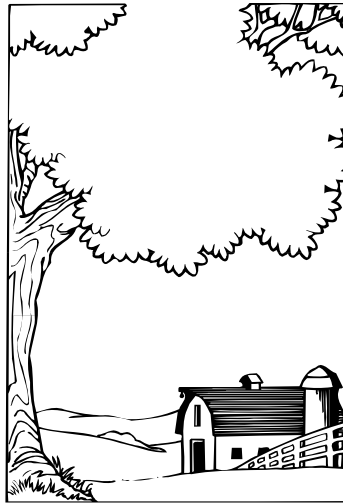
Thanks to the wonderful Master Gardener workers at Gilgal Garden in the past years, we were honored to be included in the special award Gilgal received in the 2008 Utah Heritage Foundation program this year. The awards were given at a luncheon on Friday, April 18.

We were among a very prestigious group receiving special recognition. The Artspace at 3rd South between 3rd and 4th South in Salt Lake City, Old Iron Town State Park in Cedar City, Porter Farmstead in Centerville, Silver Star in Park City, Gilgal Garden in Salt Lake, 953 East Second Avenue, Salt Lake City, Stratford Hotel, Salt Lake City, Russel J. Bezette for many restorations in LaVerkin, the Salt Lake Tabernacle in Salt Lake City and the State Capitol Building. You can see this is an impressive group of restoration and renovations of older projects.

Bob Bliss who is a member of the Gilgal Board received the Lucybeth Rampton Award for lifetime achievement. This is given to one who has given hours of labor, talent, and advice to the community. We are proud of this humble, hard-working man who has contributed so much to the Gilgal Garden.

The award we received includes the restoration of the stonework Thomas Childs created and the garden recovered and created by the Master Garden group, from the beginning to this present time.

WE ARE STILL TRYING TO WORK ON TUESDAYS, 3:00p.m. to 6:00 p.m., fighting the weather each week. Those of you who have been cheated out of your hours by the storms are welcome anytime and if you need to make special arrangements contact Bev by e-mail at [beverlysudbury@yahoo.com](mailto:beverlysudbury@yahoo.com). Thanks to those who came in the cold and helped to start our clean-up. Look forward to springtime.



## WHEELER FARM VEGGIE PATCH

WOW! HELLO, MASTER GARDENERS!!

We are excited about working at the WHEELER FARM VEGETABLE GARDEN. We look forward to working with you and hope many of you can come as volunteers. BRING YOUR SHOVEL, RAKE, TILLER, HOE.

We will be there on Wednesday evening starting at 6 p.m. and staying until dark. Please come then to get instructions on what

## HELLO MASTER GARDENERS AND APPRENTICES!

Please join us for our UAF gardening kick-off on Tuesday, May 13th at 5:00 pm. Thereafter, Tuesdays at 5:00 pm is our regular start time (which is different than listed in the April issue of *The Garden Patch*). We need 4-6 volunteers weekly.

We are happy to announce that UAF has a newly installed drip system. It was sad to see that the previous drip system had deteriorated and needed to be replaced, because the Master Gardener volunteers installed that first drip system with the help of Sherm Fox.

If you cannot come on May 13th, and if you cannot come at 5:00 pm, THEN come as soon as you can. UAF is a concrete building 1408 South on 1100 East (West side).

WE LOOK FORWARD TO WORKING WITH AND GETTING ACQUAINTED WITH YOU!!!!

### MASTER GARDENER LOGO SHIRTS AND BAGS 4 SALE

You can see the various styles of shirts and their prices on the web at [w.utahmastergardeners.org/logoShirts2005.pdf](http://w.utahmastergardeners.org/logoShirts2005.pdf) Also for sale are SLGMA logo canvas bags in four different colors for \$12.00. You can order from Barbara at [endlesspromos1@msn.com](mailto:endlesspromos1@msn.com)

Check out the USU Extension Web Site

<http://extension.usu.edu/saltlake>

Follow the Master Gardener links

# Calendar

Thursday, May 15  
 Dr. Paul Zuckerman  
 Slide Presentation on the  
 central Wasatch range  
 wildflowers  
 In the classroom

Friday-Saturday June 6-7  
 State Master Gardener  
 Mini college  
 Ogden Area  
 More info coming

June 19  
 Photography in the Garden  
 With Amy Hargreaves Judzis

To see the latest issue of The Garden Patch online, plus past issues, go to:  
<http://www.slmg.org/gardenPatchTOC.html>

**THE GARDEN PATCH**  
*is ON THE WEB at*  
**www.slmg.org**

# Bulletin Board



You can read our past issues  
 on the web at:

<http://www.slmg.org/gardenPatchTOC.html>

Please note that the current year is the  
 first column, not the third column.  
 Issues from previous years are



The Garden Patch is published monthly  
 by the  
 Salt Lake Master Gardener Association.  
 Editor: Jenny Allgrunn  
 Send address changes to:  
 e-mail: [gardenpatch2@juno.com](mailto:gardenpatch2@juno.com)



Jordan Valley Water Conservancy District is offering a number of great classes starting now. There wasn't enough room to list them here, but you can go to [www.jvwcd.org](http://www.jvwcd.org) to find them. They include designing an efficient sprinkler system, Utah Weather and Water Outlook, Water-saving Turfgrass ideas, Water-wise Landscapes, Landscaping Difficult Areas, Utah-friendly Lawn Care, Growing Utah Native Plants, Drip Irrigation, Fall Gardening and more. The classes are held starting in May and going through September.

Each is a 2 hour class

Classes are free to the public and held at  
8215 South 1300 West in West Jordan.  
Call 1-877-728-3420 to reserve your seat.

### **If You Are Interested . . .**

Would you like to “save a tree” and just receive an email each month with the link to the newest issue of The Garden Patch? If so, please let us know at [gardenpatch2@juno.com](mailto:gardenpatch2@juno.com). Please say whether you still want the paper copy sent to you or not.