

THE GARDEN PATCH



June 2008

Salt Lake Master Gardener Association

Vol. 10, No. 6

Calibrachoa

By Jenny Allgrunn

A few years ago an interesting plant appeared among the annuals at the local nurseries. It looked like a smaller flowered petunia but came in colors like orange and bronze as well as white, purple, yellow, red, and pink. Not a petunia, it is calibrachoa. Most of us call it Million Bells.

Calibrachoa is in the Solanaceae family, as is the petunia. I couldn't find it in my gardening books, probably because it is a recent addition to the plant industry. They have grown wild in coastal areas in Latin America. The first cultivars were released in 1992. An article in the June 2008 issue of *Garden Gate* shed some light on its name and habits.

Calibrachoa is actually a tender perennial (as are petunias and several other favorites we tend to treat as annuals.) Because it trails nicely, it makes a great container plant.

Among its virtues are that it does not require deadheading. It is a pretty constant bloomer, only pausing to waiting for the hottest few days of summer to end. It has a slight fragrance. If it starts looking leggy or brown, just pinch it back and feed it a little. It will respond with new growth. It isn't fussy about water as long as it doesn't get overwatered.

There are several series of calibrachoa on the market: Superbells®, Callie™, Cabaret™, and Million Bells® (thus the name we tend to use as its common title.) Unfortunately I haven't located a pronunciation for it, but I assume it is either *cal uh break o uh* or *ca LIB ra koa*.



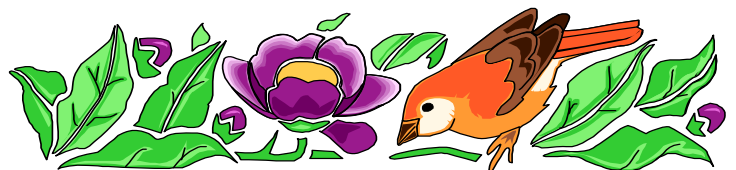
Within the slightly musty pages of *The Collected Poems of Robert Frost* was this poem, a beautiful answer to the question -- "Why garden?"

Putting in the Seed

By Robert Frost

*You come to fetch me from my work to-night
When supper's on the table, and we'll see
If I can leave off burying the white
Soft petals fallen from the apple tree
(Soft petals, yes, but not so barren quite,
Mingled with these, smooth bean and wrinkled pea;)
And go along with you ere you lose sight
Of what you came for and become like me,
Slave to a springtime passion for the earth.
How Love burns through the Putting in the Seed
On through the watching for that early birth
When, just as the soil tarnishes with weed,
The sturdy seedling with arched body comes
Shouldering its way and shedding the earth crumbs.*

Collected Poems of Robert Frost, published in 1930.



SL County Fair

By Val Chatwin

This year the Salt Lake County Fair will be held Aug. 5, 6, 7, 8, starting at 11 a.m. and going until 11 p.m. each day. I am the Supervisor of the Agriculture this year and fellow Master Gardener John Kalaski is an assistant. Jay Fullmer is still around to keep us on track also. They are going to have the classes like we tried out last year again. Paul Zuckerman will bring his surround of wild flower pictures. Our area there is called the Garden Gate.

TOMATO TASTE TEST

Of all the classes we held last year, the most people came to the Tomato Taste Tests. Bart Anderson and John Kalaski did one on separate days; they told about how they grow them (they use quite different methods, interesting enough.) They grow both heirloom tomatoes and hybrids, and both men had personality plus in teaching. I would like to plan for a Tomato Taste Test all four days. So I need two volunteers for the other two days. I do not know who grows several kinds of tomatoes besides Golden. I talked to a fellow from the new class at the Home & Garden Show, where we were in the booth together. He grows heirlooms and said he would do a class but, stupid me, I failed to get his name. Whoever you are, please call or e-mail me at valray@netutah.net 641-3546, 254-3357? If someone has the tomatoes and would like someone else to teach, we could do that too.

The taste test would not have to have any heirloom types; we had a taste test at Pioneer Park last summer with the little cherry tomatoes. We only had two kinds. The people really get serious about it. This wasn't anything scientific but we wondered if the first one they tasted would always be the one they liked so we alternated it. We were not recording anything. It was really fun.

FIRST DAY HELPERS

Those who want to help on Wednesday Aug. 5 which is the first day, 7 a.m. until noon, please e-mail me or tell me at meetings. They give you lunch and free parking. The fair starts at 11 a.m. so you can tour around the fair. The Master Gardeners who helped on opening day made things work well. They helped enterers, put entries out and helped the judges. They were wonderful.

MASTER GARDENER QUESTION ANSWERERS

During the times when there is no class going on in the Garden Gate area we would like 2 or 3 Master Gardeners at the Garden Gate area to answer questions. Here is the schedule:

Wednesday, Aug. 6 - 7 a.m. to noon. also shifts at 11 a.m. and 1 p.m. and between 4 p.m. and 5 p.m.

Thursday, Aug. 7 - 11 a.m. to 1 p.m. and 4 p.m. to 5 p.m.

Friday Aug. 8 - 11 am till 1pm and 4pm to 5pm

Saturday Aug. 9 - 11am till 1pm and 4pm to 5pm

I prefer you to email me valray@netutah.net I am hard to catch on the phone

If you can help, great. If not, don't forget to bring your families and attend the fair for fun!

Wheeler Farm Veggie Garden

Dorothy Lee and Bob Moss are project managers for the Wheeler Farm Veggie Garden and would love to have some volunteers come and help them.

Bob will be there on Tuesdays from 1:00 to 3:00 p.m. His Email is rmos34@comcast.net

Dorothy will be there on Wednesday evening starting at 6:00 p.m. until dark. Her Email is creekside55@yahoo.com

Come and get instructions from us one time and then you may come back and work any-time that fits into your schedule. Dorothy would love to have people work with her on Wednesday night. It's fun to get better acquainted and we can learn so much from each another.

Jordan Valley Water Conservancy District Conservation Garden Park Garden Fair

Saturday June 14 - 8 a.m. to 2 p.m.

Master Gardeners have a booth at the Garden Fair providing information and resources, answering gardening questions at these popular garden fairs. Contact Barbara Larsen to volunteer. Email: endlesspromos1@msn.com

Farm Field Days Thank You from Lisa Chin

Thank you to all the MG's who drove out to Herriman for the Farm Field Days activity in May. I appreciate everyone filling in for me while I was sick. I understand everything went well, once the wheat grinders were set up, and that you taught 2000 children about seeds and wheat over the two day period. Good job! You are all awesome. Thank you so much!

EXTENSION

Utah State
UNIVERSITY

By Maggie Shao

It's already June and we've had a wild wet spring. Hopefully no flooding will occur along the rivers and streams with the relatively cool weather. I'm glad to see some of the Master Gardener Apprentices have taken to writing articles for *The Garden Patch*. I hope you all consider going to the annual State Master Gardener Conference that will be held June 6 and 7 in Ogden and Brigham City. It's a great opportunity to meet Master Gardeners throughout Utah and learn some great information.

It's been four weeks since I returned from my trip to China. It was such a wonderful and amazing trip. When I first started with USU Extension in Salt Lake County, I wrote a short biography to introduce myself and if you remember, I love to travel. It's hard to believe I haven't been abroad (going anywhere that required a US Passport) since I returned from my Peace Corps assignment in Ghana West Africa in 2001. I went to China on a study tour to learn about philosophy and Traditional Chinese Medicine (TCM) to provide a context for my own Soaring Qigong practice. I took a six-week class to learn Soaring Crane Qigong when I first settled here in Salt Lake. I had studied yoga and had some martial arts training in Tae Kwon Do, so this qigong intrigued me. I learned it from a local acupuncturist, who studied with Professor Chen Hui-Xen, Professor of the Qigong program at the Oregon College of Oriental Medicine.

The China trip I went on was coordinated and led by Professor Chen and her daughter Ping Ping. They have been taking students of qigong every year since 1994 to China to broaden students' knowledge of Chinese philosophy and Chinese medicine. I was fortunate to travel to China back in 1991 with seven Chinese-American women were invited by the Shanghai Women's Federation to travel to China. So much has changed! Seventeen years ago, the primary mode of transportation in big cities like Beijing and Shanghai was still the bicycle, with a few buses sharing the road. I believe now there are over 2 million private vehicles in Beijing alone and 30 new cars are introduced every day (at that rate, that's about 11,000 new cars on the road

every year). We flew into Beijing and deplaned at Terminal 3, the world's largest airport that opened about 2 months ago. All this is of course in preparation for the Olympics that will be held in August. Riding from the airport into downtown Beijing, so many newly planted trees lined along the eight lane highway. Fortunately, it was April 11 – and many of the flowering trees like quince and cherry were in full bloom.

The first week of our trip was spent mostly with outstanding speakers and qigong practice. We stayed in the suburbs of Beijing near an enormous park. This was very convenient for our daily morning and afternoon Tai Chi and qigong practices. And many Chinese were also in the park playing badminton, jogging, stretching, doing Tai Chi practice. In the evening, there was a small local commercial area, where a few of us discovered we could get our hair shampooed as well as receive a 20 minute head, shoulder and back massage for the equivalent of \$3 US. One evening, with my limited high school Mandarin and the hair stylist, I spent the evening in an interesting cultural exchange talking with the local clientele while getting a permanent (that's why my hair is curly in case you hadn't noticed).

Some of the highlights of the trip include; climbing the Great Wall (different section than the one I visited 17 years ago, this portion being much steeper or my age catching up with me), many delicious meals, really great group of fellow qigong enthusiasts (with group members from Ireland, New York, Port Angeles, WA, Seattle, WA, and California), Longmen Caves where 100,000 buddhas are carved into the limestone cliffs along the Yi River, taking a cruise down the Li River in Quilin with the famous Karst hills.

Since this is an article for the Garden Patch I must write about the plants. At the Temple of Heaven park, where thousands of Beijing residents use the park for calisthenics, badminton, tai chi, ballroom dancing, our group practiced qigong with about 100 others all practicing a form called Super Energy Method and that was great fun. We then walked through the park and saw a 500 year old juniper (I have a picture of that tree). Out at the Ming Tombs, many of the old and revered trees (300 to 500 year old) were supported and protected. At the Shaolin Temple, there was a 1,500 year old gingko that must have been planted at the same time the temple was founded in 496 AD. However, many of the younger street trees and landscape trees were topped, and suffer from poor tree pruning practices and

Continued on Page 4

Will spring ever come this year? It is either cold or really hot. I had to unload the greenhouse when the temperatures reached into the 90s. Then we had cold weather and rain with the threat of snow on the benches. Oh well, the garden is growing great so far and I can not complain about that.

When I took the 'Glacier' tomatoes out of the greenhouse. I was able to pick 3 dozen and they did not last long in the house. The tomatoes in the garden came out of the water walls on the 15th of May, and they were still behind as far as other years are concerned. Blossoms are setting and I have some small fruit showing, so I am off to a good start.

With the cooler weather and with rain I was able to put the rest of the flowers into the beds and planters. My wife wanted some different variety of flowers this year and I had a hard time justifying the high price they wanted for them. Next year I will let her order the flower seeds and maybe I can get away a lot cheaper. Yeah, fat chance of that.

The cole crops under the Remay@ or row cover finally stretched the cover as tight as a drum and had to be removed. There are some small heads of broccoli setting and the cabbage is starting to head out also. I had a hard time getting the carrots to germinate and have replanted some more of them. It was just too cold for them to get a good start and then the heat came and I don't think they were ready for that. With the rain and cooler weather I hope they will do better.



By Wm. Golden Reeves

I planted peppers just before the tomatoes and have had them in water walls in the garden. They are starting to bloom. I will need to put a shade cloth over them when the weather warms up next month. I have the ground around them covered with clear plastic to add heat to the soil and it seems to be working great.

In my perennial garden in the front where I had trouble with the pocket gopher, I leveled the ground out and covered it with mulch and waited to see if he was still working in the bed. So far so good. No activity to be seen in the last month, so I can assume the cat had a good meal. Thanks to the stray cat, blessings do come by waiting.

The Rose of Sharon starts were doing great in the basement but when moved into the greenhouse they dropped a lot of their leaves. In the last few days out of the greenhouse they seem to be rebounding, I hope they make it. The rosemary starts are doing great and I will soon plant the mother plant in the garden, where it should have been for the last two years. I found out last fall that it was winter hardy in this area and I have been keeping it in the house during the winter.

The lawns have been slow to recover from the winter damage. My back lawn, where the dogs are relegated to, will probably never recover. I need to replace some areas with some paving stones. They like to race around the large barrel planters and in doing so they tear up the lawn. Then when it is wet they chase each other and want to come in the house with muddy feet, it is up to me to clean their muddy feet or the dirty floors.

I think spring is here but I hope the hot summer waits its turn and gives us a little taste of spring before the heat sets in. Happy gardening!

USU - Maggie's Trip, continued from page 3

probably won't survive to be 500 years old. In Henan and Shaanxi Province – we traveled by train, and were able to see many Paulownia trees (in bloom) and black locust trees between the cities of Zhouzheng and X'ian. X'ian is famous for the tombs where the Terracotta Soldiers were found. However X'ian old city is amazing with the city wall built in the 14th Century still intact, and you can walk (or bike or even ride a small electric car) the entire 8.5 mile length on top of the city wall. X'ian also is the home of the beautiful Big Goose Pagoda. Lots of huge graceful bamboos were abundant especially along the Li River in southern China.

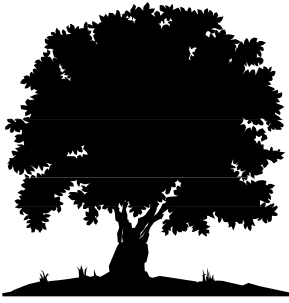
So I'm now over jet lag, and read most of the 350 Email messages waiting for me in the office (I still have a few I need to

Wasatch Front Garden Calendars

*available from
Ann Scott
or Julie Myers*

*Content includes information about
landscape, soil, irrigation, plant
choices, and waterwise gardening,
plus a year round calendar of tips to
keep your garden looking great. \$3.*

MURRAY PARK



Murray Park is going strong. The perennial island on State Street has been cut back and cleaned up. The cacti bed in the arboretum is ready for summer and the annuals are in. Consider volunteering at Murray Park this season. See chart for days and times.

Remember

Fresh From the Heart

Grow a little extra to donate to the local food pantries.

Annual People Helping People Garden Tour

The 4th annual PHP Garden Tour is scheduled for Saturday, June 14th in the Avenues. We will need about 24 master gardeners to staff the gardens - 12 each for morning and afternoon shifts. They will receive a free ticket to the tour, an event T-shirt and lunch.

Contact Barbara Larsen if you are interested in doing volunteer hours at this event. Contact her at endlesspromos1@msn.com

You can also just enjoy the event without volunteering. Tickets will be \$10 this year. All proceeds support the Successful Employment Program, helping women earn a living wage.

Let's Make a List

By Jo Turpin

As Master Gardeners we have all spent many hours with our noses in a gardening book or been up until all hours researching questions on the internet. I have come across several books that are invaluable to me and that I recommend to others. There are many websites available with good, solid information too; I especially find that some of the extension sites have excellent information that I can feel good about using and dispensing. If you have a favorite gardening book and/or website that you would like to share please send the title, author, etc. or website address (and your name) to me at jot1956@hotmail.com with a one-line explanation, ie: 'Best veggie book ever' or 'This website has the most drought tolerant plants ever' or 'This is my herb bible'. Later on this year we will publish this list in the newsletter for everyone to use and enjoy. Thanks!

Utah Aids Foundation Gardens

By Kay Packard

UTAH AIDS FOUNDATION work parties will be held each TUESDAY 5:00-7:00pm. Come when you can during that time. This garden is located at 1408 South 1100 East. It is now an avocado colored building marked UAF on the west side of 1100 East. Parking is available on the street proceeding east. PLEASE bring your own gloves, tools, and drinking water. We look forward to seeing and working with you. THANK YOU to each person who has worked on this garden.

VOLUNTEER OPPORTUNITIES

We are in need of speakers for the following:

Thursday, June 5 8:00 Producing and saving seeds 2350 Creek Road.

Tuesday, June 10 - 6600 Greenfield Way - Cottonwood Heights apartments. They would like to learn how to grow plants in pots on their patios, beginning-type gardening. Also, Tuesday, June 24 - a class that teaches them a little more.

We still need someone for Monday, June 23 - 11:00 a.m. Pest and Weed Control 868 W. 900 South.

Please call Barbara Larsen.

SLMGA PROJECTS

Project Project Leader/Coordinator	Location	Activities	Time	# of Volunteers Needed Per Event
Channel 4 Garden Heidi Wayman Email: heidi.wayman@usu.edu	2175 W. 1700 S. SLC	<ul style="list-style-type: none"> • General garden maintenance • Pruning, weeding, planting, etc. 	Tuesdays 8:00 to 10:00 am April thru August	3 each Tuesday
Christmas Box House Peggy Call Email: pcall@xmission.com	3660 S. West Temple, SLC	<ul style="list-style-type: none"> • Teaching gardening to children at residential facility. • Tending garden at facility. 	Tuesdays 6:30 to 7:30pm Year round	2 or 3 each Tuesday
Diagnostic Clinics Maggie Shao Email: maggie.shao@usu.edu	2001 S. State St. SLC	<ul style="list-style-type: none"> • Helping public walk-ins with plant questions or problems at our office. 	Mondays 1 to 4pm June thru August	Open
Fresh From The Heart I <i>(Growing and harvesting veggies from your own garden)</i>	Various food pantries around SL County	<ul style="list-style-type: none"> • “Grow a row”: Setting aside part of your garden to grow and harvest high quality produce for a food bank. 	Flexible Growing Season	Open
Fresh From the Heart II <i>(Teaching container gardening)</i> JoDeane Condrat Email: condrata@comcast.net Jennie Gibson Email: gibsongg@earthlink.net	Various food pantries around SL County	<ul style="list-style-type: none"> • Teaching container gardening at food pantries. • Gathering donations. • Coordinating purchase of items for container gardens. 	Usually daytime May-June	4-6 per event
Garden Patch Newsletter Jenny Allgrunn Email: gardenpatch2@juno.com	Various	<ul style="list-style-type: none"> • Researching and writing articles for the Salt Lake Master Gardener Association newsletter. 	Flexible Year round	Open

Project Project Leader/Coordinator	Location	Activities	Time	# of Volunteers Needed Per Event
Gilgal Garden Bev Sudbury Email: beverlysudbury@yahoo.com	749 E. 500 S. SLC	<ul style="list-style-type: none"> • A Public garden that Salt Lake MGs have been working to restore it to its original unique condition. 	Tuesdays 3 to 6pm April thru September	4-6 each Tuesday
Murray Park Becky Hansen Email: hansenpollei@mstarmetro.net	5100 S Murray Park Lane Murray	<ul style="list-style-type: none"> • Pruning, weeding, planting, etc. 	Tuesdays 8 to 10 am April thru September	4-6 each Tuesday
Pioneer Park Farmers Market Karen Crook Email: garykarencrook@comcast.net Andrea Berman	300 W. 300 S. SLC	<ul style="list-style-type: none"> • Public information on USU resources and general gardening information. • Providing some diagnostic and recommendations for plant problems. 	Saturdays 9am to 1pm June 14th and 28th July 12th and 26th Aug. 9th and 23rd Sept. 6th	4 per Saturday
Phone Help Line Maggie Shao Phone: 468-3178 Email: maggie.shao@usu.edu	2001 S. State St. SLC	<ul style="list-style-type: none"> • Helping public with plant questions on the telephone. 	M-F 9 to 5pm 2-3 hour shifts May thru Sept.	1 per shift
Public Relations & Community Talks Barbara Larsen Email: endlesspromos1@msn.com	Various locations thru SL County	<ul style="list-style-type: none"> • Libraries • Neighborhood & homeowner associations • Church groups • Relief societies, etc. 	As requested by community groups April thru August	1-2 per talk
Salt Lake Co. Jail Horticulture Maggie Shao Phone: 468-3178 Email: maggie.shao@usu.edu	3415 S. 900 W.	<ul style="list-style-type: none"> • Hands on veg. gardening with low risk inmates at the Adult Detention Center 	Mondays or Wednesdays or Fridays 9 to Noon May thru August	1-2 per shift

Project Project Leader/Coordinator	Location	Activities	Time	# of Volunteers Needed Per Event
Tracy Aviary Matthew Utley Email: Mat-thewU@TracyAviary.org	589 E. 1300 S.	<ul style="list-style-type: none"> • Assist with enhancing grounds and bird habitats • Help plan and create a demo garden of native plants that attract birds 	Sundays 9 to Noon And Mondays 7 to 9 pm May thru September	Minimum of 2 More always welcome
Utah Aids Foundation Kay Packard Email: kaypackard@comcast.net Jeff Asay Email: jeffrey.asay@comcast.net	1408 S. 1100 E.	<ul style="list-style-type: none"> • Planting, weeding, and general maintenance. 	Tuesdays 5:30 to 7pm May thru Sept.	2-4 each Tuesday
WHEELER FARM GARDENS				
Veggie Bob Moss Email: rmoss34@comcast.net Dorothy Lee Email: creekside55@yahoo.com	6351 S. 900 E.	<ul style="list-style-type: none"> • On June 17, 1886 Sariah H. Pixton & Henry J. Wheeler married and made their home on this 75 acre farm. • In 1969 SLCo. purchased Wheeler Historic Farm. It was placed on both the Utah State and National register of Historic Places in 1976. • MGs work several gardens in the 120-year-old historic farm offering a wide variety of opportunities for volunteers. 	Wednesday 6 p.m. to dark	2-4 each Wednesday
Pumpkin Golden Reeves	6351 S. 900 E.		As needed	As needed
Herb LaWana Kosel Email: lawanak_01@msn.com	6351 S. 900 E.		Wednesdays 6 to 8pm	2-3 each Wednesday
Home Sandy Burgess Email: sandyleeb46@msn.com Ofc. phone: 324-5132 Email sandy.burgess@questar.com	6351 S. 900 E.		Wednesday 6 to 8pm	2-3each Wednesday

VOLUNTEER HOURS: WHAT COUNTS?

General Guidelines

1. Time worked on any Master Gardener-approved project. Please communicate with the project coordinator before and after working on the project, to learn which tasks have current priority and to report what you have accomplished.
2. Travel time to and from Master Gardener projects, speaking engagements, and board meetings.
3. Time spent fulfilling association assignments such as project coordinator, special committees, etc.
4. Time spent fulfilling an elected position on the executive board, including meeting time.
5. Reasonable time spent in preparation for a speaking assignment, as well as the time spent fulfilling the assignment.
6. Time spent in preparing a news article or doing other chores that help with publishing or distributing The Garden Patch and the Utah Master Gardener website.
7. If you donate volunteer hours to a community project other than a Board-approved Master Gardener project, the hours are subject to approval by the USU Extension Agent serving as the County Master Gardener coordinator.
8. If you volunteer at Master Gardener projects in another county, you should report your hours to that county's USU Extension Master Gardener coordinator. If that county does not have a Master Gardener program, or if the project has been scheduled as a multi-county cooperative effort, report your hours to your home county. If in doubt, please ask your USU Extension Master Gardener coordinator. **NO DOUBLE COUNTING OF HOURS.**
9. **No time is counted for work in your own yard or a neighbor's yard.**

Apprentice Master Gardeners

Non-certified students must complete 40 hours on SLMGA approved projects. Volunteer service hours must be in at least three different board-approved projects, one of which should include at least 10 hours. A majority of these first 40 hours **MUST** involve actual hands-on gardening: getting your fingers dirty. Exceptions are to be cleared through the USU Extension Master Gardener coordinator.

**When you have met your
graduation requirement of 40 hours,
don't quit!
There is much more to learn and
work to accomplish!**

Val's View

By Val Chatwin

The Master Gardeners were invited to participate with some other groups like the Farm Bureau at the Butterfield Living Farm in Herriman teaching children about food crops. I went out at 9 a.m. Four Master Gardeners came, and we told the kids about wheat and had them grind some. We had a bucket of wheat and three hand grinders that looked like the old meat grinders we all used to have. The plastic table was too thick to fasten the grinders. A guy from the Extension (I have seen him around but don't know him) found us a 1 inch board. It was broken, had three rusty nails in it, and had something that appeared to be cow poo on it. I had a towel in my car and some paper towels, so we cleaned it off and put the towel on it so it looked better. Someone had to hold the board when the kids turned the grinder. In the afternoon Julie Myers and her daughter came, so Julie got that job.

I had brought quart bottles of cracked corn, rice and some 40 years old storage wheat someone gave me for the chickens when they were discarding it. I told the kids about finding wheat in the Egyptian tombs, which sprouted when it was planted. The most important foods in the world are these three whole grains. They had school buses bring kids. One time I counted 8 school buses lined up along the lane. They would come and leave and others would take their place.

When I asked if the kids had ever seen a wheat stalk, hardly anyone raised their hands. I showed the picture and told them that it grows wild along the roads and in the empty lots as well as in cultivated fields.

Up-Coming Events

Saturday, July 12 - 9 a.m. Tour of Wheeler Farm and Murray Park SLMGA projects. See chart for addresses

Thursday, July 17 - 7 p.m. SLMGA General Meeting at Engh Gardens 8214 South 700 East

Thursday, August 14 - 7 p.m. Tour of Gilgal Garden and Tracy Aviary SLMGA projects. See chart for addresses. The Aviary is in the southwest part of Liberty Park

Thursday, August 21 - Annual Summer Party at Murray Park Pavilion #5. 5100 South State Street or enter from 5400 South. Food assignments coming next month. Nominations of candidates for 2009-2011 board will be taken. Also, bring your extra iris, lily, etc., labeled, for the iris exchange.

Gilgal Garden

By Bev Sudbury

With the help of reliable standbys from other years and the enthusiastic new class people, we are moving right along with our spring clean-up of the garden. Thanks to generous donations from Howard Andrews and John Dixon we have a good start on our garden for the summer. We have planted gladiolus corms, shrubs, perennials, and a new tree thanks to them. We will be replacing trees which needed to be removed due to disease. We are putting a grape vine in the circle of stones representing the tribes of Israel. We are adding some new shrubs, and we will appreciate any other donations from any sources Master Gardeners may find for us to use. Thanks to everyone and welcome to anyone who has time to be with us on Tuesdays, 3:00 to 6:00 p.m.

Conservation Garden Park Fair a Bloomin' Success!

No doubt due to beautiful weather, 424 folks stopped by our Master Gardener Booth on Saturday, May 17th. Most folks inquired about selecting water-wise plant materials.

I want to thank the enthusiastic, friendly, supportive, and knowledgeable group of volunteers---you are amazing: Howard Andrews, Sheri Barnes, Gigi Brandt, Peggy Call, Val Chatwin, Karen Crook, Lynn Fuller, Dorothy Lamb, Kerry Morton, Chriss Schneller, Ann Scott, and Sandy Severance. Thank you all very much, it was my pleasure to work alongside each and every one of you!

-- Barbara Braeden, Project Leader

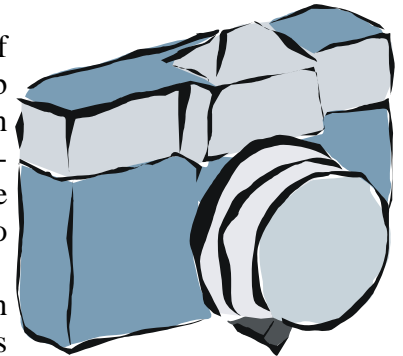
Get the IPM Newsletter

Get on the mailing list for current Utah State University Extension Integrated Pest Management information and resources. Marion Murray, USU IPM Project Leader, puts out weekly IPM Advisories. She will have three separate IPM newsletters for the following topics: Fruits, Woody Plants, and Vegetables. The Fruit IPM Advisory gives information on Degree Days and when trapping and monitoring information to give consumers and orchardists the timing for management (e.g. Apple Codling Moth recommendation on spraying). The Woody Plants IPM Advisory gives information on woody plants – when they are in bloom and any current pest issues. New this year will be a vegetable IPM Advisory. For archived IPM Advisories, go to <http://utahpests.usu.edu/ipm/htm/advisories>

DON'T MISS THE JUNE MEETING!

Dr. Paul Zuckerman of the Wasatch Camera Club gave a great presentation on Wildflowers in our May general meeting. He gave out free cds of his excellent photos to everyone.

Now we can all learn how to take effective photos of flowers from one of his fellow Wasatch Camera Club members, our own Master Gardener Amy Hargreaves Judzis. She will speak at the general meeting on Thursday, June 19 Room 106 Columbus Center, 2531 South 400 East. She will then offered a hands-on lab that Saturday, June 21 at 9 a.m. in Bev Sudbury's garden at 1258 East Lavon Circle (3430 South). Bring your camera on Saturday and practice some garden photography.



Farmer's Market at Pioneer Park

By Karen Crook

It is that time of year again. Our booth at Pioneer Park's Farmer's Market starts on June 14th and continues every other Saturday from that date until September. Thanks to all of you that have signed up to help. We left some open spaces for those of you that would like to join in the fun. Please e-mail me at garykarencrook@comcast.net to reserve your spot. The hours are from 8 until 1:00. The usual shifts are 9-11 and 11-1:00. See you there!

MASTER GARDENER LOGO SHIRTS AND BAGS 4 SALE

You can see the various styles of shirts and their prices on the web at w.utahmastergardeners.org/logoShirts2005.pdf Also for sale are SLGMA logo canvas bags in four different colors for \$12.00. You can order from Barbara at endlesspromos1@msn.com

Calendar

Friday-Saturday June 6-7
State Master Gardener
Mini college
Ogden Area

Thursday, June 19 Photography in the Garden

With Amy Hargreaves Judzis
at 7 p.m. In Room 106 Columbus
Center
2531 S. 400 East
And
Saturday, June 21 at Bev
Sudbury's garden for a hands-on
lab. Bring your camera
1258 East Lavon circle
(3430 South)

**Check out the USU Extension Web
Site**

<http://extension.usu.edu/saltlake>
Follow the Master Gardener links

**THE GARDEN PATCH
is ON THE WEB at
www.slmg.org**

Bulletin Board



You can read our past issues
on the web at:

[http://www.slmg.org/
gardenPatchTOC.html](http://www.slmg.org/gardenPatchTOC.html)

Please note that the current year is the
first column, not the third column.
Issues from previous years are



The Garden Patch is published monthly
by the
Salt Lake Master Gardener Association.
Editor: Jenny Allgrunn
Send address changes to:
e-mail: gardenpatch2@juno.com

If you don't get email or haven't caught up on your email reading, these pages have info that was sent out in Maggie's recent email updates:

Hope you had a nice Memorial Day Weekend,. if I remember right, last year in 2007 we had snow-storm on Memorial Day! If you ever go hiking in the foothills around Salt Lake you'll notice some of the wildflowers are blooming now like Balsam Root, lupine, Wasatch penstemon, phlox, lady slipper vetch. I think it will be an awesome year up in the Albion Basin. I recommend hiking Catherine's Pass above Alta Ski resort anytime in June or July (as soon as the snow melts) and you'll see a wonderful display of wildflowers.

Dr. Paul Zuckerman did a wonderful presentation on Wildflowers of the Wasatch at the last Master Gardener meeting on May 15. I think he has the patience and skills necessary to get up close and see the fine details of these wildflowers.

I also want to mention the great turnout at the Conservation Garden Park Fair Master Gardener Booth. We had over 400 people come and stop by the MG booth and thanks to all the volunteers, especially Barbara Braeden (for coordinating) who answered questions and provided information to the public.

Don't forget to register for the Master Gardener State Conference for June 6-7 in Ogden and Brigham City. The annual conferences are always packed with education and training and also a nice social event to meet other Master Gardeners from other counties. Heidi W. has helped me put the Master Gardener events on the webpage so if you want to see what other events that are coming up with the Salt Lake Master Gardener Association you can go to <http://extension.usu.edu/saltlake/htm/horticulture/mgprogram/slmga> for a list of events. I've got a few updates.

Volunteer Opportunities:

Youth Garden Education Project at Murray Boys and Girls Club. Murray Park. Thursday mornings through the summer.

Contact Lisa Chin, something_clever@msn.com if you are interested in working with youth on establishing and maintaining their vegetable gardens and teaching children utilizing some of the curriculum (adapted from Ag in the Classroom) on soils used at Wheeler Day Camps from last summer.

Training Opportunities:

Dividing Ornamental Grasses, Utah State University Extension now has multimedia (video) clips on the webpage.

Go to Utah State University Extension homepage at <http://extension.usu.edu/> and under **Recent Multimedia** look for these videos; **Ornamental Grasses (Dividing)** and **Dividing Perennials**. These are about 5 minute videos by Weber County Horticulture Agent and Director of the Ogden Botanical Garden Jerry Goodspeed. We'll be visiting the Ogden Botanical Gardens at the upcoming Annual Master Gardener Conference June 6-7.

Other Items of Interest:

Master Gardener Field Trip - Saturday May 31, 2008 at 9:00am at International Peace Gardens (1060 South 900 West) and Bob Bauer's Rose Garden (880 West 200 South from 9am to 4pm)

Everyone is invited to visit the Peace Gardens located on the banks of the Jordan River. Meet in the parking lot and walk through the gardens with other Master Gardeners. Bob Bauer's garden is very close to the Peace Gardens (but limited parking) so after the Peace Gardens we can carpool over to Bob's garden that has over 400 roses. Everything in Bob and Mary Bauer's garden is grown organically, which formerly was the asphalt park lot of this old Drug Store. Bob maintains a website on roses at <http://www.rose-roses.com/>.

Annual Master Gardener Conference, June 6-7, 2008 hosted by Weber and Box Elder Counties.

Tours and field trips will be held on Friday June 6 and guest speakers, workshops will be held on Saturday June 7 at Brigham City USU Regional Campus. Cost will be \$40 for both days or \$20 for Friday and \$25 for Saturday. To register go to this link <http://extension.usu.edu/boxelder/htm/horticulture/classes> and click on 2008 State Master Gardener Conference This link has the agenda/schedule as well as registration form. Since the Conference is in Ogden and Brigham City, and gasoline prices are high, a good idea would be to carpool. If you are interested in attending and want to carpool (drive or be a passenger and contribute a few dollars to the driver towards mileage), let me know.

Free Water-Wise Landscape Classes 2008 Schedule JORDAN VALLEY WATER CONSERVANCY DISTRICT

Easy Ways to Make Your English-style Landscape Utah Friendly

Saturday, June 7

10 to noon

Megan Guenter, Central Utah Water Conservancy District
English-style landscapes consist of large swaths of lawn bordered by trees and shrub beds. While commonly used in Utah, this style is not the best choice for our climate. Learn easy and effective ways to convert your landscape to fit Utah's climate, while still maintaining a look everyone can love.

Water-wise Ideas and Answers with "Joy in the Garden" (2 classes)

Thursday, June 12, and Thursday, August 28

6 to 8 p.m.

Joy Bossi, Radio host and expert garden consultant
Radio host and garden consultant Joy Bossi will tour the Conservation Garden Park, providing many excellent landscaping insights and ideas to make your own landscape live up to its potential. Come with your questions and walking shoes.

Designing with Utah Native Plants

Saturday, June 14

10 a.m. to noon

Faye Rutishauser, Red Butte Gardens
A water-wise landscape starts with a design that implements water-wise principles and techniques. These principles will be discussed, along with how to use Utah natives in the landscape. Held during the June Garden Fair, space will be limited. Register early to reserve your seat.

Dealing with Difficult Landscape Areas

Saturday, June 14

Noon to 2 p.m.

Larry Sagers, USU Extension and KSL "Greenhouse Show"
Following a live broadcast at the June Garden Fair, Larry will present some great options for dealing with park strips and other difficult landscape areas. This class will be held during the June Garden Fair so reserve your seat early.

Utah-friendly Lawn Care

Saturday, June 21

10 a.m. to noon

Eric Marble, Chanshare Sod Farms

Most people want their lawns to be lush and green. In Utah this can be almost impossible, but with the proper care, any Utah lawn can be green and save water. Discover some techniques you can use to save time, money, and water.

'Smart' Irrigation Controllers Made Easy

Saturday, July 19

10 a.m. to noon

Ed Mathieu, Water Logic Technologies
Smart irrigation controllers can take the complexity and guesswork out of timing your irrigation system. Learn about new technology that is available and save time, frustration, and water in your landscape.

Drip Irrigation Explained

Thursday, July 31

6 to 8 p.m.

Clifton Smith, Jordan Valley Water Conservancy District
Although an excellent way to save water, drip irrigation can seem complicated. This class will cover the basics of drip irrigation, as well as the components that make up an efficient drip system.

Native Utah Plants & Their Care

Saturday, August 23

10 to noon

Barney Barnett
Many beautiful and water-wise native plants are being marketed and developed, and are great choices for our landscapes. This class will cover which work best and how to keep them looking their finest.

Water-wise Ideas and Answers

with "Joy in the Garden," class 2

Thursday, August 28

6 to 8 p.m.

Fall Gardening

Thursday, September 11

6 to 8 p.m.

Clifton Smith, Jordan Valley Water Conservancy District
Fall is a great time to plant, transplant and prepare your garden for a dazzling spring. When skillfully designed, fall gardens can also be beautiful in their own right. Learn about what plants are at their peak in the fall and how to take care of the rest of your landscape.

**Classes are free to the public and
held at 8215 South 1300 West in
West Jordan.**

**Call 1-877-728-3420 to reserve your
seat.**

The Garden Patch
Salt Lake Master Gardener Association
4545 West 3100 South
West Valley City, UT 84120

**NON-PROFIT
U.S. POSTAGE
PAID
SANDY, UT 84070
PERMIT No. 56**

Come to the Columbus Center for our June General Meeting

Due to elections, we can't use the classroom this month. Our Garden Photography meeting will be

Thursday, June 19

7:00 p.m.

Room 106

**Columbus Center
2531 South 400 East**

The Saturday lab will be at
Bev Sudbury's garden.
See page 10 for details

Do you need a few plants for your pond?

Traci Dahle has some extra water iris, etc. to give away.
smoki1@smartfella.com

If You Are Interested . . .

Would you like to "save a tree" and just receive an email each month with the link to the newest issue of The Garden Patch? If so, please let us know at garden-patch2@juno.com. Please say whether you still want the paper copy sent to you or not. We also had good luck with emailing the file to some of our MGs instead of waiting a few days for the web copy to be posted.. If you have Microsoft Office on your computer, you probably have the Publisher program and could view it that way. Let us know what you would like.