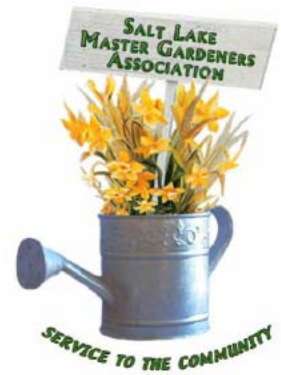


THE GARDEN PATCH



April 2005

Salt Lake Master Gardener Association

Vol. 7, No. 4

PINES FOR UTAH

Pinus flexilis
Limber Pine



Dr. Michael Kuhns, Extension Forester
Utah State University

We all like pines, and they are great trees to grow in our towns and cities. Sometimes I think they get ignored a little though, so a discussion of pines is worthwhile and that's what I'll do here.

First, though, what is a pine? We all think we know, but do we? "Pine" is a word used by many, interchangeable with "fir", to describe any needled evergreen. This imprecision leads to confusion when people communicate, but it's understandable. In this article the word "pine" will mean any species in the genus *Pinus*. *Pinus* genus is in the family Pinaceae, which also includes the spruces (genus *Picea*), true firs (genus *Abies*), Douglas-fir (genus *Pseudotsuga*), and larches (genus *Larix*) that often are generically called pines.

Pines have needles in bundles of two to five (one in singleleaf pinyon) rather than borne individually, and large woody cones that mostly hang down and that fall off whole rather than fall apart. They are intolerant of shade and generally fairly tolerant of heat, drought, and moderately high soil pH, which makes them good for sunny spots in our urban landscapes. They vary a lot in needle length, color, and fineness; bark color and texture; and cone size and shape, so it is possible to pick a pine for a variety of landscape uses.

There also are two major groups of within the *Pinus* genus, the soft or white pines and the hard pines. The former mostly have needles in bundles of five and the latter in bundles of two to three, along with other differences in cones, wood, and vascular systems. Knowing the difference between the two can be useful, since in general I have noticed that hard pines from milder climates than ours tend to be a little tougher than soft pines. Utah's native soft pines (limber pine, bristlecone pine, singleleaf pinyon, and pinyon), however, are quite tough.

The pine's intolerance of shade often means that they tend to self-prune as they grow, losing lower needles and eventually branches as the growing upper crown shades out the lower crown. This is less pronounced in open-grown trees than in a forest or other shady area, though, since crowns in the open get sun from the side. However, this means that their use for visual screens or wind and snow barriers needs to be carefully thought out, since they may not provide much screening as the lower crowns thin-out. Spruces, firs, and junipers are better for such barriers, since they keep their lower foliage and branches longer, and often for life.

So what are some good pines for Utah? First let's talk natives. There are six native pine species in Utah: ponderosa pine (*Pinus ponderosa*) in the Uintas and in southern Utah locations like Bryce Canyon, lodgepole pine (*P. contorta*) in the Uintas and the Bear River range, limber pine (*P. flexilis*) throughout Utah, bristlecone pine (*P. longaeva*) in southwestern portion of the state, singleleaf pinyon (*P. monophylla*) throughout the western part of the state at lower elevations, and pinyon or Colorado pinyon (*P. edulis*) in all but the northwestern part of the state, again at lower elevations. All of these species can be good for planting in valley locations in Utah, except maybe lodgepole pine, which lacks much ornamental character. All will need extra moisture to get established and to survive, though be careful not to over-water. I think that the best of these is ponderosa pine for a large tree, and singleleaf pinyon for a smaller tree. Several cultivars are available for limber pine and bristlecone pine.

Continued on page 7

NOTES FROM THE PRESIDENT

By Traci Dahle

Hi everyone!

I hope you all had a chance during the warm weather to do some catching up in your yards. I finished my new "old fashioned" garden with the new outhouse my wonderful husband built me last fall. Now I just need to get my tomatoes and peppers in the ground. I got my cold weather plants in my old garden, also some pansies planted and a new tree in my front yard. (I shouldn't go to the garden shops. I can't resist buying something.) Ken says our car is trained to turn in at a nursery no matter how he tries to hold the steering wheel straight.

I would appreciate it if EVERYONE WOULD WEAR THEIR BLUE BADGES AT OUR MEETINGS. If you are a new student, please wear the badge you received from Maggie. We are supposed to wear them at all of our events and at anything we participate in when we are representing our group. I will try to have name tags for guests and spouses so we can get to know their names also.

Thanks to Steve Regan Co. and their wonderful people who came to our last meeting. I thought they had some good new ideas for us to use.

Don't forget about our plant swap next month. All are welcome to come, whether you have plants to share or not. There is always plenty for everyone. We will have some more fun giveaways like we have had at every meeting this year, so please come and join in on the fun.

Thanks to everyone who helped at the Home and Garden Show. We had a very good turnout because of the good weather. I think people were getting the spring bug. One problem: We had some people who signed up but didn't show up for their timeslot, without letting anyone know. In the future, I think it would be nice IF YOU SIGN UP be sure to SHOW UP or let someone know that you can't make it. It puts people on the spot when they have to stay longer to cover for someone who failed to come.

Thanks for everyone's hard work. See you soon!

P.S Just a couple of notes to help out when you do your volunteer work.

A. Always mark your tools with your name incase you misplace them

B. If you are trimming bushes or trees, please remember to wipe your tool blades with Clorox wipes, or better yet spray them with Lysol it is not so hard on your tools, hands and gloves. (This keeps from spreading plant diseases)

C. When the weather starts getting warmer don't forget to have drinking water with you, and rest when needed.

D. It's better if you write your hours down as soon as you can so you don't forget. (Bonnie said you can e-mail them to her. Try to do it at least every other month so she is not bombarded with them in October. bperfetto@co.slc.ut.us) You are better off checking with her once in a while and make sure she got them so we don't misplace how many you put in.

DAVE'S BITS AND PIECES

By David E. G. Kempff

It has been a long time since I have written anything, so here goes.

The fruit tree pruning at This is the Place State Park was very good this year. A new extension agent and no snow, not even a cold breeze. (Sorry, Wade.) I hope that all who attended gained information on how to prune fruit trees and that you get better fruit off your trees. It was fun to work with new members and with the public, but most of all it was nice to work with light weight clothes on.

Now that the sun has started to get hot again, we need to review some facts so that we don't get skin cancer. First: Stay in the shade during mid-day hours (about 11 a.m. to 4 p.m.), the prime time for UV exposure. Second: Wear clothes that cover arms, legs, and neck. Some articles of clothing now have UV ratings on the labels to indicate how well they protect the skin. A broad brimmed hat is a must. Wear sunglasses that block out 95-100% of UV rays. Third: Most important, wear sunscreen with a SPF (Sun Protection Factor) of 30 or greater. It must be applied at least 20 minutes before going outside to give it time to bond with the skin. Re-apply every four to six hours. Read the instructions to be sure.

I received some information on a battery operated mower. For those of you who don't want gasoline around the house, this is a good idea. This mower is said to have the power of a 5 hp gas engine. They are also very quiet. I read that the Jacobsen's golf course mower could do all 18 greens on one charge. The big advantage of this is that you would not be adding to air pollution.

In looking through *The Digger*, a magazine from the Oregon Association of Nurseries, I found an article about Christmas tree growers. They donated over 1,000 trees to our military personnel at Fort Hood. School children presented homemade cards to go with them. But the most interesting fact was that the transportation was provided by a 53-foot refrigerated truck from Central Refrigerated Service of West Valley City, Utah. The driver (and former Vietnam veteran), Ralph Weaver, donned a Santa suit before pulling into Fort Hood. Santa took the time to listen to all the children's Christmas wishes. This industry and its related business always holds surprises for us.

Have you cleaned up your tools yet? March is a good time to get them ready for the upcoming season. Take your mower to the repair shop to get a tune up. With the warm temperatures of the last few weeks, the weeds are back and need to be taken care of now.

Did you prune your rose bushes yet? Over the winter I have transplanted eight roses into my beds at home from one of the condos that I take care of. Traci and I planted 23 more of them at Gilgal late last October. It looks like they have survived; only five or six are not doing well. We have cut them back to six inches above the ground so they will have a lot of growth to feed as the roots grow this season. We'll have to see how they do.

For now, so long. Let's get together on a MG project and get our hands dirty sometime soon!

THE FANTASY, THE PLAN, THE LABOR, AND THE HARVEST

by Amy Hargreaves Judzis

1. The Fantasy

It was February 27. The air was soft, clean and almost honey warm with the promise of springtime. I itched to plant something. I yearned for a big garden, like I'd had before I married Chainsaw Bob. Back in North Carolina, I'd made it a tradition to plant my sugar snap peas on Valentine's Day, claiming that planting them on a day dedicated to love made them all the sweeter. It was two weeks past Valentine's Day; I had to plant something.

So I walked around my backyard and surveyed the possibilities. It was depressing. We've been in this house for three and a half summers, and every time I've tried to stick my spading fork into the ground, all I've done is bend the tines. Thank goodness it's a Sears Craftsman, I've traded it in for a new one several times.

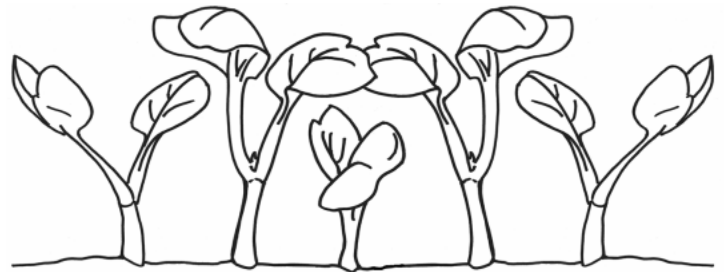
The biggest problem with the yard was the five 60 foot tall Lombardy poplars that marked the east property line. They shaded the yard for half the day – the half of the day that the house's shadow wasn't stretching over the yard – and their roots and volunteer offspring made an almost solid underground web that perpetually defeated my spading fork. Of course there was also the large area planted to perennial vinca and bishop's weed on the north side of the yard where I envisioned a flowerbed. The south side of the yard was the "natural area," a small copse of scrub oak, old apple trees, English ivy, and a mysterious, burr producing, groundcover. The house formed the west boundary of the backyard. The front

yard wasn't even a consideration. I'd ceded that to Chainsaw Bob when we'd moved in so that he could wage war on the quakie volunteers, master the lawn, and tame all of the junipers into balls. He has done an excellent job – I won't make any editorial comment on what I think about trimming upright junipers into balls.

My Beloved has tried to help me with the backyard a couple of times, usually when I've been out so he could present me with a *fait accompli* upon my return. Like the time he pruned all the trees with his chainsaw, or the time in late July he got the vinca and bishop's weed, poppies and irises under control with his lawnmower. But for all of his helpfulness, he'd been adamant about not letting me get someone with a big rototiller in to break up the ground on the north side because it would take out the underground irrigation lines.

Times do change, though. The poplars started losing some branches, so we had all five of them taken down last July. True, we still have five enormous stumps at the back of the yard, but they were treated with herbicide and, so far, cross your fingers, it's kept the volunteers down. The vinca and bishop's weed had gotten so out of hand that he's finally decided to consign the sprinkler system to perdition and let me get someone to till the area.

So February 27th I walked around the backyard, stared at what I have and fantasized about what I could have. And I planted sugar snap pea, radish, and spinach seeds in the big plastic pots I'd grown my tomatoes in last year. My token of hope for the future.



SOUTH SALT LAKE PROJECT MANAGER NEEDED

We are looking for a project manager to help us with South Salt Lake City planning. In the past, South Salt Lake has let us use the Columbus Center for our Mini College, Master Gardener classes, and various meetings. We agreed to help them with their outside work. (Last fall we planted 75 trees for them.) They also want us to have a Master Gardener booth at some of their events. What we are looking for is someone to work directly with them and get the volunteers when needed. If you are interested, please call Traci or Maggie so we can make the arrangements. Thanks !

PUBLIC RELATIONS POST IS OPEN

We need someone to fill the Public Relations job on the SLMG board. The job would consist of a variety of things, such as arranging advertising in the city weekly for upcoming classes, sending information on upcoming events to OurCommunityConnection.com to put on their web sight, and, if possible, get with radio or television stations to publicize our group. This is something that can start small and work to something good for the Master Gardeners. Please call if you are interested - Traci or Maggie to make the arrangements. Thanks

With the early warming in the later part of February, I was able to transplant my early tomatoes into the garden on the 28th of the month (in water walls, of course). I was able to reinstall my drip irrigation system, test it out, prepare the north part of the garden, and plant some of the early vegetables. This has to be the earliest I have ever been able to plant or even prepare the soil for planting.

The blood letting is over with for this season. That means the rose hedge has been pruned and the residue shredded for composting. I have been able to complete all the pruning on my fruit trees. The grape vines are the only other plants to be pruned; I will wait a little longer to see what buds grow before I take care of that.

My rose hedge was planted 18 years ago, and some of the plants are starting to die. I took some cuttings last August and put them under gallon plastic milk jugs with their lids on. (Cut out the bottom of the jug.) I have been checking their progress over the winter, and they are still growing. I planted them in between some of the bushes that showed signs of dying. It will take a few years for them to fill in, but I can wait. I found aphids on two of the plants, but was able to mix a little spray and treat them.

The 'Glacier' tomatoes that were seeded before Thanksgiving have tomatoes on them turning ripe in the greenhouse. I have not planted those in the garden but the ones planted before Christmas that I did plant in the garden have set blossoms already. The Cole crops have been planted as well, and I had enough water walls to cover them. I will leave them on until I am ready to plant my other tomatoes about the first week in April or when they outgrow the space in the basement. At that point I will move the water walls onto the tomatoes and cover the Cole crops with Remy@ or row cover.



By Wm. Golden Reeves

There are a few disappointments from last year I need to report. I was able to get some pansies at a great price late in the fall (or I should say early winter.) I was able to plant them and get them set for the winter. This spring I found most of the plants had heaved out of the ground and their roots had dried out. With the lack of root growth and not being able to fertilize properly, they were not well anchored into the ground.

The 'Argonaut' squash I planted last year that took over the garden was a disappointment. Even after storing the produce properly, they had hardly any taste when cooked. The butternut squash that was grown next to them produced very well and had great taste. There are some plants we try and experience a great disappointment. Oh well, the compost pit gains more debris to process.

I brought some 'Glacier' tomato plants and some artichokes plants to our January meeting and gave them away. At our March board meeting Tracy and Trudy gave me heck because their artichoke plants turned out to be tomatoes. They grabbed the biggest plants and did not look to see what they were getting. The artichokes were planted three to a pot and the tomatoes were a single plant to each pot. I guess it is hard to tell the difference when you do not know what the young plant is supposed to look like. Sorry, ladies. He! He! He!

Our April meeting will be the annual plant swap. This was started many years ago and has been one of our most attended meetings and really a lot of fun. It is an opportunity to share your excess and take home some real treasures. Everyone is welcome, whether you are able to bring plants or not. There will be lots of plants to take home and try. This is a *must attend* meeting.

I am ready for spring to come; most of my gardening work has been taken care of. The radishes are up, along with the spinach; the daffodils are in bloom, just waiting for the weather to follow suit and warm up.

MURRAY PARK

We are off to a wonderful start this spring. So far, the weather has been good and we have accomplished much. Anyone wishing to join us can meet Tuesdays at 8:00 am at Murray Park Office. For more info. call Becky Hansen

VOLUNTEER/LEARNING OPPORTUNITIES

April 6, 13, and 20. 5 p.m.- dark. **Utah State Fair Park** garden orientation and lessons. Renewal pruning, planting, and more. Contact Cathy Miller for more information.

April 9, Saturday. **Apple Grafting** Demonstration Class, 9-11 a.m. Watch and learn as Bart and Golden graft apple scions onto existing



Master Gardener Volunteers at the March Home and Garden Show
Faythe Adams, Eva Daniels, Lisa Sims, Peg Crowley, Kevin Adams

Thanks to all who volunteered for this event!

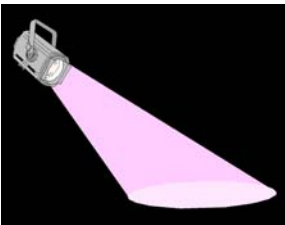
orchard trees. You may take home a few scions of Honey Crisp, Cameo, Elliot's Gold, or Ambrosia. 5340 West 3500 South

April 13, Wednesday. 4-7 p.m. Help Kay Packard and Jeff Asay dig and transplant a large Japanese maple tree at the **Utah Aids Foundation** garden at 1408 S 1100 East. Discussion of balled and burlapped trees versus containerized or bareroot planting.

April 16, Saturday. 9 a.m.-Noon. Ornamental Grasses for Utah. Short lecture on which grasses perform best in our area. Then watch, participate, and learn how to dig and divide a perennial ornamental grass for transplanting. Trudy Guest will lead this event held at the **Wheeler Farm Herb Garden** (near the historic home) 6351 S 900 East in Murray.

April 19, Tue. 9 a.m.- Noon. Potting up Cannas at **Murray Park** with Becky Hansen. Contact Becky to learn where you will be working.

April 16, Sat, 10 a.m.- 1 p.m. Foothills Conservation Service Opportunity, in cooperation with Red Butte Garden. Learn to recognize invasive weeds. Field walk/hike, pull/cut weeds, plant native plants. Call/e-mail Maggie— maggiew@ext.usu.edu if you will participate. This actually continues through summer.



Spotlight

On Robin Chubak



Eighteen years ago Robin Chubak moved here for the climate - the winters are much warmer than in Canada where he grew up. After serving serve an LDS mission in Utah he went home to Canada and returned two weeks later. His wife, Sheila is from West Valley. Their seven children, ages 3-15, are a busy lot of singers, dancers, and musicians. This must have something to do with their mother, a music major. Robin is more interested in sports and played on many teams, often as captain.

Robin is employed by National Laser. Thanks to Sheila, he also has a part-time job at Western Garden. She suggested he could use an employee discount, considering how much money he spent on the yard. Although the nursery receives a full return of his pay, Robin is happily steeped in gardening, experimenting with new plants, some at no charge. The drawback is working long hours in the springtime when his own garden beckons.

He refers to his yard as a labor intensive "edible landscape." The quarter acre lot abounds with chokecherries, currants, grapes, and 25 fruit trees that Robin keeps so well-pruned he can reach the top. He's added cultivars from his native Canada such as Saskatoons, known to us as serviceberries, and four strains of raspberries.

For his large family, herbs and vegetables are a must. Under dad's tutelage, his five-year old has tended a cantaloupe patch for the last three seasons. Robin also passes along the basics of plant science to adults at a Granite District continuing ed class. Despite their varied likes and dislikes, Robin insists the kids taste all foods. "You can't say you don't like tomatoes until you've tried 'em all," he says. Each year he introduces a new species from among the 3,500-4000 varieties. (Bart would be proud.)

Robin will take a well-earned vacation this July. He's headed to Saskatoon where his mom, brother and two sisters still live. Incidentally, his plans include attending the Master Gardener International Convention which just happens to be in Canada this year.

Adventures in Tilling

By Val Chatwin

Well, I've been tilling.

I know we aren't suppose to till too often, but some of us have to: the garden's too big (60 X 50 feet), the fall leaves, squash vines, marigolds stems, grass mulch and corn stalks need to be knocked down and mixed in with the soil so it doesn't blow away. The chickens have had a wonderful fun time in the garden all winter eating every morsel of broccoli, cabbage, chard, tomatoes, and bugs. And now their poop needs to be buried so you can't see it. It is amazing how much dung they produce; I've been raking it off the lawn and deck. Actually I don't think the chicken manure helps that much, although I'll have to admit the Kentucky bluegrass that borders their fence is thick and green. Chickens are so pretty, friendly, and personable, I'm sure if they could be trained to a litter box people would have them in the house. Soon they will be back in their yard, because of the droppings AND because they love to eat practically everything in a young vegetable garden. Last year I planted 'Bright Lights' chard. There sure weren't many seeds in the package, so it was a short row anyway and then the chickens got out of their yard. One scratched where the chard was planted and gobbled down some of the few seeds. I only got eight plants, and they were scattered around and not in a nice straight row.

Tilling smoothes the soil out and fluffs it up; it's nearly like vacuuming your house. It makes the place look tidy. It is also interesting to go over every foot of your piece of earth in a slow manner and see what is going on with it. Sometime I have found lost things, but nothing wonderfully interesting this year.

I did find lots of walnuts that the magpies bring over from the neighbors trees to hide. I picked them up and put them in my pocket to take into the house to crack. (Pockets are great! I don't ever buy pants without pockets any more even if they are really cheap or very fashionable.)

I picked up tons of garden labels I had made from cottage cheese cartons, printing on them with a permanent marker. They survived well with the plant or seed name and date of planting not even faded. The labels from Okubo's (where I usually get my starts) are still in good shape too.

I found half a potato, and not a big one either. That means I managed to find most of them during the harvest last fall. That isn't always easy to do. The beets were still in good shape so I dug what was remaining for supper. Bones. I found quite a few bones—the chickens love meat so I let them pick every carcass clean. The starlings and magpies will do that too. Just put that turkey carcass out on your lawn and pretty soon you will have a flock of fighting birds and clean bones to put in the garbage.

It is interesting what you don't find. We have buried quite a few chickens over the years, and there is no sign of them. The many bags of leaves that were tilled in last year have dissolved. Not walking on your planting area surely seems like good advice; my pathways in the garden are always compacted and hard to turn over.

Amazingly, I have a gopher. Actually what I really have is gopher runs under the garden and west flower bed. Over the years it seems that gophers inhabit it until I poison them, then after awhile

Drip Irrigation Seminars

Taught by SLMG Sherm Fox

Saturday, April 9 10:00 a.m. to 12 noon

Wasatch Community Garden
1600 E. 800 South

Saturday, April 16 from 10:00 a.m. to 12 noon

Red Butte Garden Main Building
300 Wakara Way

Call to reserve a spot and for information on cost

Thursday, April 28 from 6:00 p.m. to 8:00 p.m.

Jordan Valley Water Conservancy District

8215 South 1300 West

Call 565-4300 to reserve a spot

that wonderful warren is discovered by another family. This spring I found a pile of dirt right under a dusty miller plant. This plant is several years old so it is big, but it was half buried. Another pile appeared in the garden last October. The soil, coming from way down under and left on top by the gopher, had hardened into white clods. I spread them around but you can still see that white soil from deep in the earth, and it is really a lot different than my garden soil, thank goodness.

As I was tilling I came onto the place where I had dumped all the apricots. There were so many apricots last year. My apricot tree is over the lawn so every apricot that forms has to be picked up, the ones that fall before they are the ripeness you want and the ones that fall with a splat. I shared them with everyone I could think of. I even put a sign out on the busy road saying, "FREE APRICOTS," and got rid of some that way but I still ended up with thousands. I would pick them up into 5 gallon buckets where they fermented into a foaming liquid. I finally I just poured those onto the garden in one spot. Was it smelly! The wasps and other insects loved it. I wonder if that alcoholic juice will enrich the soil? It formed a hard apricot leather-like crust, but winter and the chickens have reduced it to thousands of pits. I know, they will sprout. Anyone want a wonderful apricot tree in about 3 years? I don't remember what kind it is but the neighbors on the west have three that hang over the chicken pen and ripens first, then mine ripens and then the neighbor's tree on the south ripens so we have apricots here for a long, long time.

As I was tilling, the chickens had a wonderful time, walking behind me and picking up anything that came to light. The only bugs we saw, however, were some crickets under the black plastic and some earthworms. They had examined every inch of the ground way before this. Even under the black plastic there wasn't much to find. Chickens do a great job of insect control. IFA will have some soon.



PINES FOR UTAH, Continued from page 1

Superior non-native pines for Utah include Austrian pine (*P. nigra*; sometimes called black pine because its foliage is so dark green), Scotch or Scots pine (*P. sylvestris*; known for its bluish foliage and butterscotch-colored upper bark; be careful on very high soil pH sites), lacebar pine (*P. bungeana*; with beautiful, lacy bark), and Himalayan pine (*P. wallichiana*; a soft pine with very long needles). The shrubby Mugo pine (*P. mugo*) also is a good choice, but it often is over-used and non-dwarf varieties get larger than people expect. Japanese red (*P. densiflora*), black (*P. thunbergiana*), and white (*P. parviflora*) pines also are good choices, with many cultivars available. In extreme southwestern Utah ("Dixie"), Aleppo pine (*P. halepensis*) and Afghan pine (*P. eldarica*) are superior selections because of their extreme tolerance of heat and dry conditions. In these days of decreasing water availability and increasing energy prices, we can use more drought-tolerant, shade-casting evergreens. We also need alternatives to spruces in our landscapes, which are proving to be quite susceptible to insect attack on hot, dry sites. Pines fit the bill and should be used more.

Reprinted by permission of the author

ROCK GARDEN TOUR COMING UP

The 2005 Wasatch Rock Garden Society Garden Tour will be held on Saturday morning, April 30, at 9:00 a.m.. We will start at the house of John Stireman, 9657 Poppy Lane (935 East), Sandy, Utah 84070. Light refreshments will be served. We will visit 4 other gardens and the tour will end after noon at the house of Bev Sudbury, 1258 E. LaVon Circle where the Master Gardeners will hold a diagnostic clinic. You will be given an information sheet with directions to the other four gardens at John's house. Those attending the garden tour must provide their own transportation; there is limited parking at some of the houses so participants are encouraged to car pool.

The tour is free for WRGS members and this year, members of the Salt Lake Master Gardeners are invited to join as free guests. There is a charge of \$5 for all other guests. Children are not invited along unless they know as much about gardening as their parents. A test will be given. Please do not step on rocks in the gardens unless invited to do so by the garden's owner and be careful to stay on the grass and pathways. There are many tiny plants that can be easily stepped on. Also, please do not ask to use the bathrooms at the houses we visit. Stop along the way at public facilities. For further information or to make contact the day of the tour, call Cathy King.



Let's Go On a Safari

Kevin and Faythe are going on a road trip May 28th to Watusi Country (Zebra Gardens in Elwood Utah, 68 miles north of Salt Lake) we plan on seeing Purple Pumas, Baboon Bottoms, Elaina Lopes, have a Yak Attack and a little Serengeti Spahetti with some Tiger Honey. We think you will find Anaconda Love and Jackal Cackle Emu Zing (just to name a few).

Zebra Gardens is the home of Brad and Kathie Kasperek near Tremonton. Brad is an avid Iris hybridizer, and has developed some of the most beautiful irises in Utah. Check out their Web site Zebrairis.com.

Meet us at the County Complex (21st South & State). We are leaving at 09:00 am. Admission is free, bring anyone who wants to see thousands of Irises in bloom. Pack a lunch, it is about an hour drive and you may want to stay at the garden for a couple of hours or join us for lunch at the Idyll Isle restaurant in Brigham City afterwards.

Contact Faythe or Kevin if you would like to come so we can keep you informed. Mother Nature may change our weekend - if the flowers peak earlier or later but generally Memorial day weekend is when they are in their prime. We hope to see you there.



Utah Flower and Landscape Show

April 8-10

We need Master Gardener volunteers to help set up the display and to sit at the booth promoting the Master Gardener Volunteer Program. We need help for the following times:

- * Thursday, April 7, afternoon set-up
- * Friday, April 8, 1-5pm and 5-9pm
- * Saturday, April 9, 10-1, 1-5 and 5-9
- * Sunday, April 10, 11-2 and 2-4
- * Take down help on Sunday at 4pm

HELP NEEDED WITH COMPOST BIN SALE

Saturday, May 7 compost bins will be sold at Trolley Square and Gardiner Village from 7:30 a.m. to 2 p.m. If you would like to get volunteer hours doing this, please contact Steve LeCheminant

PROJECTS

Christmas Box House

Peggy Call - pcall@xmission.com
Virginia Sargeant

Fresh From the Heart

Jennie Gibson - gibsongg@earthlink.net
JoDene Condrat - condrata@xmission.com

Gilgal Garden

Bev Sudbury - beverlysudbury@yahoo.com
Traci Dahle - smoki1@smartfella.com

Magna Elementary

Ann Pixton - apixton@msn.com

Murray Park

Becky Hansen - hansenpollei@mstar2.net

Pioneer Park Farmer's Market

Karen Shurtz

Utah State Fair Park

Cathy Miller - millercb2@aol.com

Utah Aids Foundation

Kay Packard
Mike & Ann Cullis - annandmikecullis@comcast.net

Web Site

Amy Hargreaves Judzis - cliz@juno.com

Wheeler Fam Vegetable Garden

Howard Andrews

Wheeler Fam Herb Garden

Trudy Guest - trudyg1@msn.com

Wheeler Fam Pumpkin Patch

Golden Reeves - greeves28msn.com

Wheeler Fam Home Garden

Marlene Johnson - marlene32936@yahoo.com

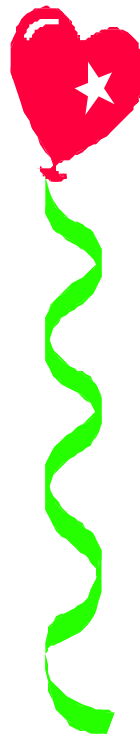
GILGAL GARDEN

April 9th is our first work party, starting around 9:00 a.m. We will have Hortence Smith, the daughter in law of Thomas Childs (the man who owned and built Gilgal) come and tell us stories about how Gilgal was built and about Thomas Childs. It will be a nice way to introduce the park so if you have not ever visited Gilgal Garden, please come and enjoy.

We will be planting an almond tree up on the mound that day plus some other clean up that is needed. We will try to get the stepping stones in so we can put in our new path ways through out the new gardens. We hope to see you all there. Breakfast snacks will be served.

We have started working at Gilgal on Tuesday nights starting around 3:00 until 6:00 or 7:00 depending on the night and the weather. Feel free to get in touch with us if you have any questions.

Bev Sudbury
beverlysudbury@yahoo.com or
Traci Dahle smoki1@smartfella.com



Fresh From the Heart

April 28, Thursday, 6-8 p.m. USU Extension training room. **Fresh From the Heart** Container Garden Teacher Training. Learn about growing edibles in containers, and how to conduct classes on this topic. Especially for volunteers who will teach and assist the Fresh from the Heart Container Gardening classes taught at Food Banks. JoDeane Condrat and Jenny Gibson lead this project. Call/e-mail them to know you are willing to volunteer and attend this training class. (See e-mail addresses above.)

Calendar

General Meeting—Plant Exchange

Thursday, April 21

In the classroom at 2100 S. State
7:00 p.m.

Come even if you don't have any plants to contribute

Saturday, April 30
Stansbury Island Tour

Outstanding scenery!

Wonderful wildflowers!

Bring your camera, water, sun protection, bug repellent, good shoes, etc.

You can take I-80 west to exit 84. Drive north to the gate. Be there by 8:30 a.m.

— Or —

meet Maggie at the Extension office by 8:00 a.m. to carpool. If you want to carpool, Please let her know a few days ahead so she can reserve a van.

If you come late, you won't be able to get through the gate onto Stansbury. Wade Bitner will lead the tour. It will last until about noon.

General Meeting
Thursday, May 19

What's New in Plants Mitchell's Nursery

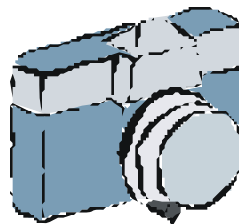
Statewide Mini-College
May 20-21
www.utahmastergardeners.org/mg-mc.html

Bulletin Board

I have 5-6 goodsized landscape rocks I want to get rid of. They can't be humanly handled and I don't have a Bobcat or equivalent. They are free to whoever can haul them off.

Contact Al Winkelman
alkelman@juno.com

Do you have drought tolerant plants growing in the shade? If so, could I please come and photograph them for a project I am working on?



Call Jennifer Knight.
Thanks!

The Garden Patch is published monthly by the Salt Lake Master Gardener Association.
Editor: Jenny Allgrunn
Send address changes to:

e-mail: gardenpatch2@juno.com

**PRSR STD
U.S. POSTAGE
PAID
PERMIT No. 56
SANDY, UT 84070**

**Please check the enclosed membership list for your name and number. If we have made a mistake, please contact Cathy Miller and/or Jenny Allgrunn
PLEASE NOTE THAT THE ENCLOSED MEMBERSHIP LIST IS FOR THE USE OF MASTER GARDENERS ONLY AND ONLY FOR MASTER GARDENER BUSINESS. IT IS NOT TO BE USED FOR PRIVATE USES BY DIRECTION OF THE USU EXTENSION OFFICE. THANK YOU FOR RESPECTING THE PRIVACY OF YOUR FELLOW MASTER GARDENERS.**

ARTICLE XII

MISREPRESENTATION OF ASSOCIATION

- *If anyone uses the association name or any of its member lists for monetary gain, they are guilty of misrepresentation of the association.
- *At the direction of the executive board, the offender will be contacted through a letter informing them of the problem. Their membership can be revoked and the unused portion of their fees may not be refunded.
- *The executive board will have the responsibility of publishing a statement each year in the month of March to the effect of "each member is not to use the association name, the title of Master Gardener, or the mailing list for commercial or other gain". These rules will also be discussed by the county USU extension personnel in the first class of each session of the new Master Gardener class.

Please mail, fax, e-mail or give your volunteer hours to:

**Bonnie Perfetto
USU Extension
2001 South State, S1200
Salt Lake City, UT 84190-2350
Fax—468-3174**

bperfetto@co.slc.ut.us

Please check back periodically with Bonnie to confirm that she has received your hours and has recorded them correctly. Remember that sometimes e-mails get lost in cyberspace, so always confirm that they were received.